



Wax Facilitates for NOCs

August 2021



CONTENTS

Yanqing National Alpine Skiing Centre	2
Alpine Skiing Cabins Allocation	2
Wax Cabin Specifications	2
Location	3
For Grinding and Wax Trucks	3
Yanqing Mountain Cluster	4
Yanqing National Alpine Skiing Centre	5
Zhangjiakou National Biathlon Centre	6
Biathlon Cabins Allocation	6
Wax Cabin Specifications	7
Location	7
For Grinding and Wax Trucks	7
Zhangjiakou Guyangshu Cluster	8
Zhangjiakou National Biathlon Centre	9
Zhangjiakou National Cross-Country Skiing Centre	10
Cross-Country Skiing Cabins Allocation	10
Nordic Combined (Cross-Country Skiing) Cabins Allocation	10
Wax Cabin Specifications	11
Location	11
For Grinding Machines and Wax Trucks	11
Zhangjiakou Guyangshu Cluster	12
Zhangjiakou National Cross-Country Skiing Centre	13
Zhangjiakou National Ski Jumping Center	14
Ski Jumping and Nordic Combined (Ski Jumping) Cabins Allocation	14
Wax Cabin Specifications	14
Location	15
For Grinding and Wax Trucks	15
Zhangjiakou Guyangshu Cluster	16
Zhangjiakou National Ski Jumping Centre	17
Zhangjiakou Genting Snow Park	18
Freestyle Skiing Cabins Allocation	18
Snowboard Cabins Allocation	18
Wax Cabin Specifications	19
Location	19
For Grinding and Wax Trucks	19
Zhangjiakou Genting Snow Park	20
Big Air Shougang	21
Snowboard Cabins Allocation	21
Freestyle Skiing Cabins Allocation	21
Wax Cabin Specifications	22
Location	22
For Grinding and Wax Trucks	22
Big Air Shougang	23

Yanqing National Alpine Skiing Centre

Alpine Skiing

Alpine Skiing Cabins Allocation

The wax cabins are allocated by the FIS according to its principle of allocation as followed:

NOC Allocation Formula	Wax Cabin/NOC	Team Cabin/NOC	Total
1 to 2 athletes	0.5	-	0.5
3 to 5 athletes	1	-	1
6 to 10 athletes	2	-	2
11 to 15 athletes	3	-	3
16 athletes or more	4	-	4

NOCs can request additional wax cabins on the Rate Card portal at a cost. Beijing 2022 cannot guarantee the fulfillment of all requests due to the limited number of wax cabins available for rent at the venues.

Wax Cabin Specifications

The wax cabins will be in modules of 18 m².

Each wax cabin includes:

- A signage/number on the outside of the wax cabin for each NOC
- Locking device and 2 keys
- 1 table and 2 chairs
- Interior lighting
- Waste bin, broom and dustpan
- Wall ski-racks and wall shelf



- Electricity: 220V/60Hz, sockets
- Interior ventilator, 1 fire extinguisher and hanger
- Space heater
- Internal temperature: 20 °C
- Flooring material: Non-skid Fine-grain floor
- Free Wi-Fi

Beijing 2022 will not provide any other waxing tools or equipment for the wax cabins.

Location

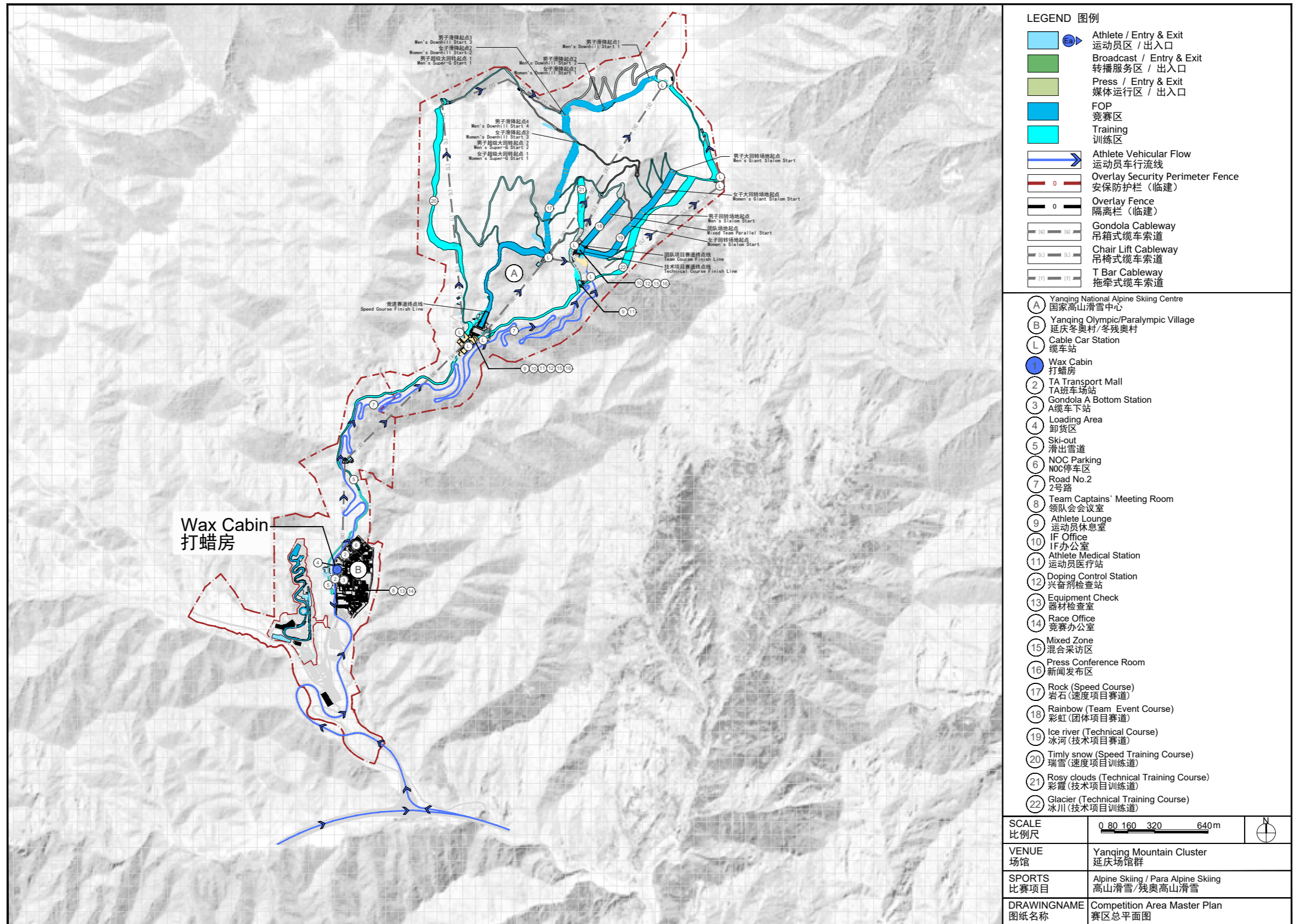
The wax cabins are located in the public core area of Yanqing competition zone and next to the gondola station, near the Olympic Village but out of its Security Perimeter Fence.

Due to limited space of the venue, there is no parking space in the wax cabins area.

For Grinding and Wax Trucks

Due to the existing limited venue construction condition and power supply capacity, Beijing 2022 will not provide space for grinding and wax trucks.

Yanqing Mountain Cluster



LEGEND 图例

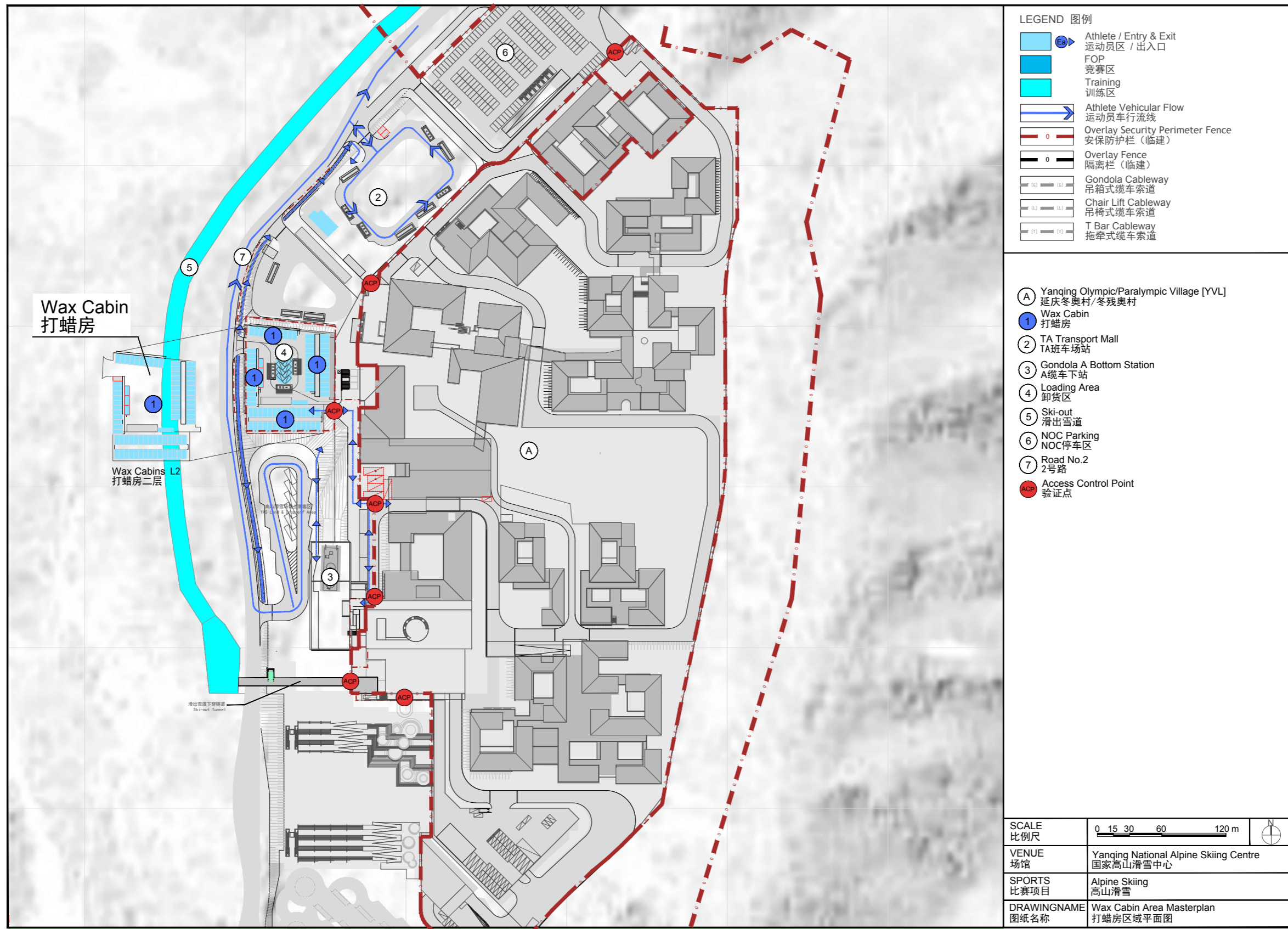
- Athlete / Entry & Exit 运动员区 / 出入口
- Broadcast / Entry & Exit 转播服务区 / 出入口
- Press / Entry & Exit 媒体运行区 / 出入口
- FOP 竞赛区
- Training 训练区
- Athlete Vehicular Flow 运动员车行流线
- Overlay Security Perimeter Fence 安保防护栏 (临建)
- Overlay Fence 隔离栏 (临建)
- Gondola Cableway 吊箱式缆车索道
- Chair Lift Cableway 吊椅式缆车索道
- T Bar Cableway 拖牵式缆车索道

- A Yanqing National Alpine Skiing Centre 国家高山滑雪中心
- B Yanqing Olympic/Paralympic Village 延庆冬奥村/冬残奥村
- L Cable Car Station 缆车站
- 1 Wax Cabin 打蜡房
- 2 TA Transport Mall TA班车场站
- 3 Gondola A Bottom Station A缆车下站
- 4 Loading Area 卸货区
- 5 Ski-out 滑出雪道
- 6 NOC Parking NOC停车区
- 7 Road No.2 2号路
- 8 Team Captains' Meeting Room 领队会会议室
- 9 Athlete Lounge 运动员休息室
- 10 IF Office IF办公室
- 11 Athlete Medical Station 运动员医疗站
- 12 Doping Control Station 兴奋剂检查站
- 13 Equipment Check 器材检查室
- 14 Race Office 竞赛办公室
- 15 Mixed Zone 混合采访区
- 16 Press Conference Room 新闻发布区
- 17 Rock (Speed Course) 岩石 (速度项目赛道)
- 18 Rainbow (Team Event Course) 彩虹 (团体项目赛道)
- 19 Ice river (Technical Course) 冰河 (技术项目赛道)
- 20 Timly snow (Speed Training Course) 瑞雪 (速度项目训练道)
- 21 Rosy clouds (Technical Training Course) 彩霞 (技术项目训练道)
- 22 Glacier (Technical Training Course) 冰川 (技术项目训练道)

SCALE 比例尺	0 80 160 320 640m	
VENUE 场馆	Yanqing Mountain Cluster 延庆场馆群	
SPORTS 比赛项目	Alpine Skiing / Para Alpine Skiing 高山滑雪/残奥高山滑雪	
DRAWINGNAME 图纸名称	Competition Area Master Plan 赛区总平面图	

Wax Facilities for NOCs

Yanqing National Alpine Skiing Centre





Zhangjiakou National Biathlon Centre

Biathlon

Biathlon Cabins Allocation

The wax cabins are allocated by the IBU according to its principle of allocation as followed:

NOC Allocation Formula	Wax Cabin/NOC	Team Cabin/NOC	Total
1 to 2 athletes	1	0.5	1.5
3 to 7 athletes	1	1	2
8 athletes or more	2	1	3

NOCs can request additional wax cabins on the Rate Card portal at a cost. Beijing 2022 cannot guarantee the fulfillment of all requests due to the limited number of wax cabins available for rent at the venues.

Wax Cabin Specifications

The wax cabins will be in modules of 18 m².

Each wax cabin includes:

- A signage/number on the outside of the wax cabin for each NOC
- Locking device and 2 keys
- 1 table and 2 chairs
- Interior lighting
- Waste bin, broom and dustpan
- Wall ski-racks and wall shelf
- Electricity: 220V/60Hz, sockets
- Interior ventilator, 1 fire extinguisher and hanger
- Space heater
- Internal temperature: 20 °C
- Flooring material: Non-skid Fine-grain floor
- Free Wi-Fi

Beijing 2022 will not provide any other waxing tools or equipment for the wax cabins.

Location

The wax cabins are located in the athlete compound and near the Team Captains' Meeting Room and Athlete Lounge at the Zhangjiakou National Biathlon Centre, inside the Guyangshu Venue Cluster Security Perimeter Fence.

Due to limited space of the venue, there is no parking space in the wax cabins area.

For Grinding and Wax Trucks

Beijing 2022 has sent a *Beijing 2022 NOC Wax Truck and Grinding Machine Survey* to each NOC for confirming the requirement in July 2021. Beijing 2022 endeavored to meet the requirements from each NOC according to the survey feedback and comprehensively assessed the fact and possibility of the venue.

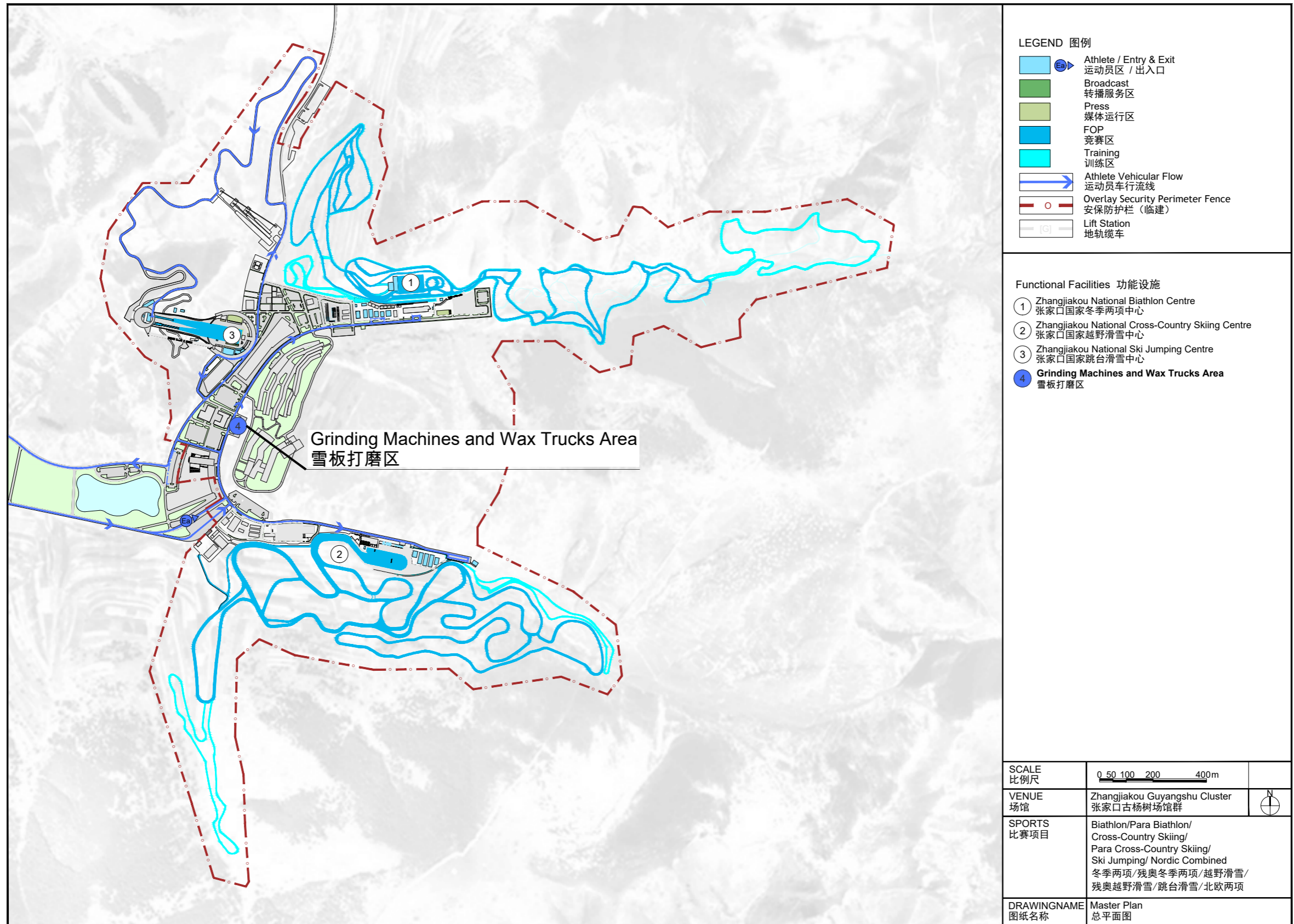
Beijing 2022 will provide secured spaces and essential specifications and supply for grinding machines and wax trucks in the Guyangshu Venue Cluster. It is a common area inside the Security Perimeter Fence which will be available for all events including Biathlon, Cross-Country Skiing, Ski Jumping and Nordic Combined.



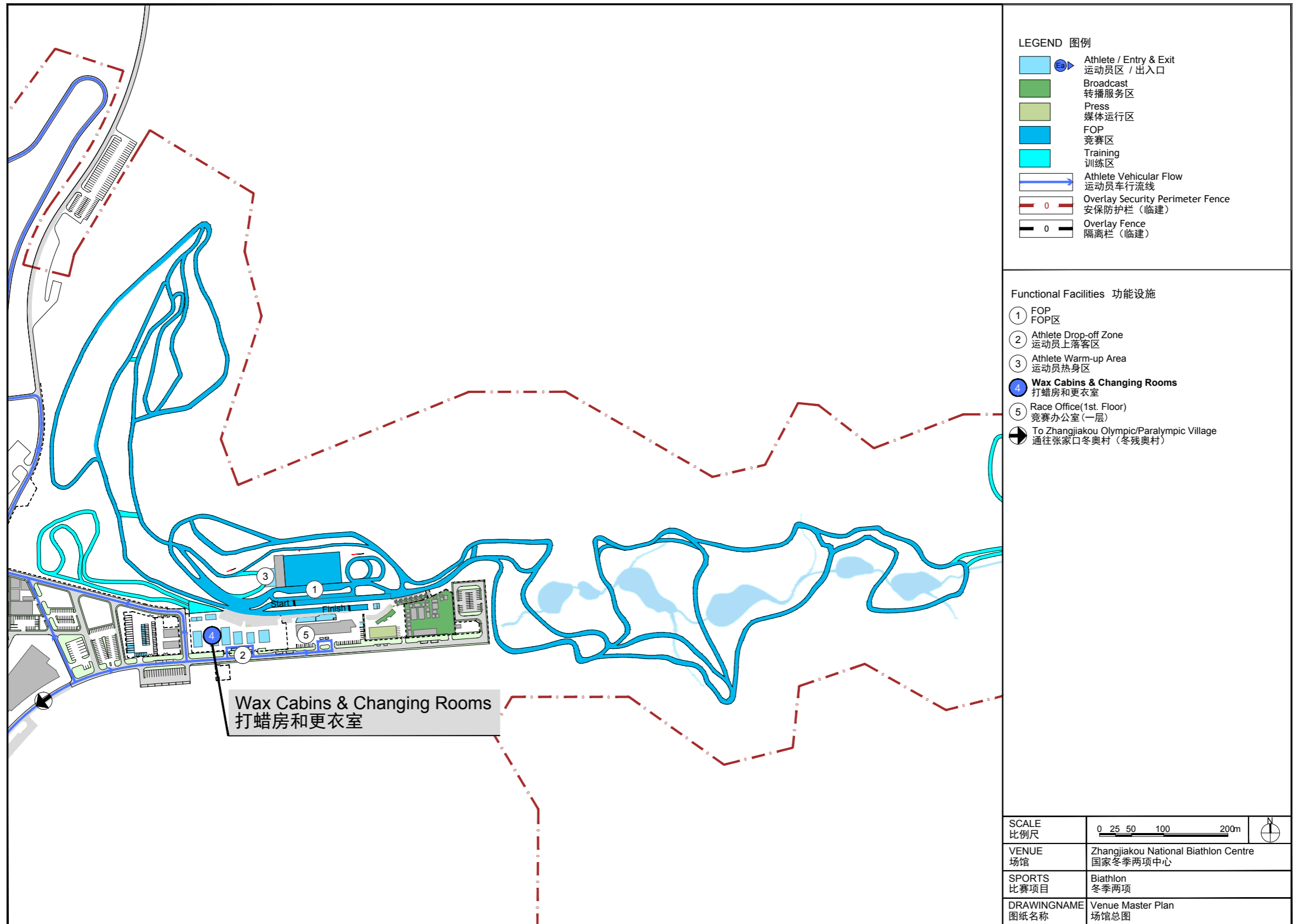
Please note that NOCs must order a special wax cabin on the Rate Card in order to bring grinding machines and wax trucks.

Please refer to the *Olympic Winter Games Beijing 2022 NOC Rate Card Catalogue* for detail information about the Non-standard Requests.

Zhangjiakou Guyangshu Cluster



Zhangjiakou National Biathlon Centre



- LEGEND 图例**
- Athlete / Entry & Exit
运动员区 / 出入口
 - Broadcast
转播服务区
 - Press
媒体运行区
 - FOP
竞赛区
 - Training
训练区
 - Athlete Vehicular Flow
运动员车行流线
 - Overlay Security Perimeter Fence
安保护栏 (临建)
 - Overlay Fence
隔离栏 (临建)

- Functional Facilities 功能设施**
- ① FOP
FOP区
 - ② Athlete Drop-off Zone
运动员上落客区
 - ③ Athlete Warm-up Area
运动员热身区
 - ④ Wax Cabins & Changing Rooms
打蜡房和更衣室
 - ⑤ Race Office(1st. Floor)
竞赛办公室(一层)
 - ➡ To Zhangjiakou Olympic/Paralympic Village
通往张家口冬奥村(冬残奥村)

Wax Cabins & Changing Rooms
打蜡房和更衣室

SCALE 比例尺	0 25 50 100 200m	N
VENUE 场馆	Zhangjiakou National Biathlon Centre 国家冬季两项中心	
SPORTS 比赛项目	Biathlon 冬季两项	
DRAWINGNAME 图纸名称	Venue Master Plan 场馆总图	

Zhangjiakou National Cross-Country Skiing Centre

Cross-Country Skiing/Nordic Combined

Cross-Country Skiing Cabins Allocation

The wax cabins are allocated by the FIS according to its principle of allocation as followed:

NOC Allocation Formula	Wax Cabin/NOC	Team Cabin/NOC	Total
1 to 2 athletes		1	1
3 to 5 athletes	1	1	2
6 to 10 athletes	2	1	3
11 to 16 athletes	3	2	5

Nordic Combined (Cross-Country Skiing) Cabins Allocation

The wax cabins are allocated by the FIS according to its principle of allocation as followed:

NOC Allocation Formula	Wax Cabin/NOC	Team Cabin/NOC	Total
1 to 2 athletes	1	0.5	1.5
3 to 5 athletes	1	1	2

NOCs can request additional wax cabins on the Rate Card portal at a cost. Beijing 2022 cannot guarantee the fulfillment of all requests due to the limited number of wax cabins available for rent at the venues.

Wax Cabin Specifications

The wax cabins will be in modules of 18 m².

Each wax cabin includes:

- A signage/number on the outside of the wax cabin for each NOC
- Locking device and 2 keys
- 1 table and 2 chairs
- Interior lighting
- Waste bin, broom and dustpan
- Wall ski-racks and wall shelf
- Electricity: 220V/60Hz, sockets
- Interior ventilator, 1 fire extinguisher and hanger
- Space heater
- Internal temperature: 20 °C
- Flooring material: Non-skid Fine-grain floor
- Free Wi-Fi

Beijing 2022 will not provide any other waxing tools or equipment for the wax cabins.

Location

The wax cabins are located in the athlete compound and near the Athlete Lounge in the east of the Zhangjiakou National Cross-Country Skiing Centre, inside the Guyangshu Venue Cluster Security Perimeter Fence.

For Grinding Machines and Wax Trucks

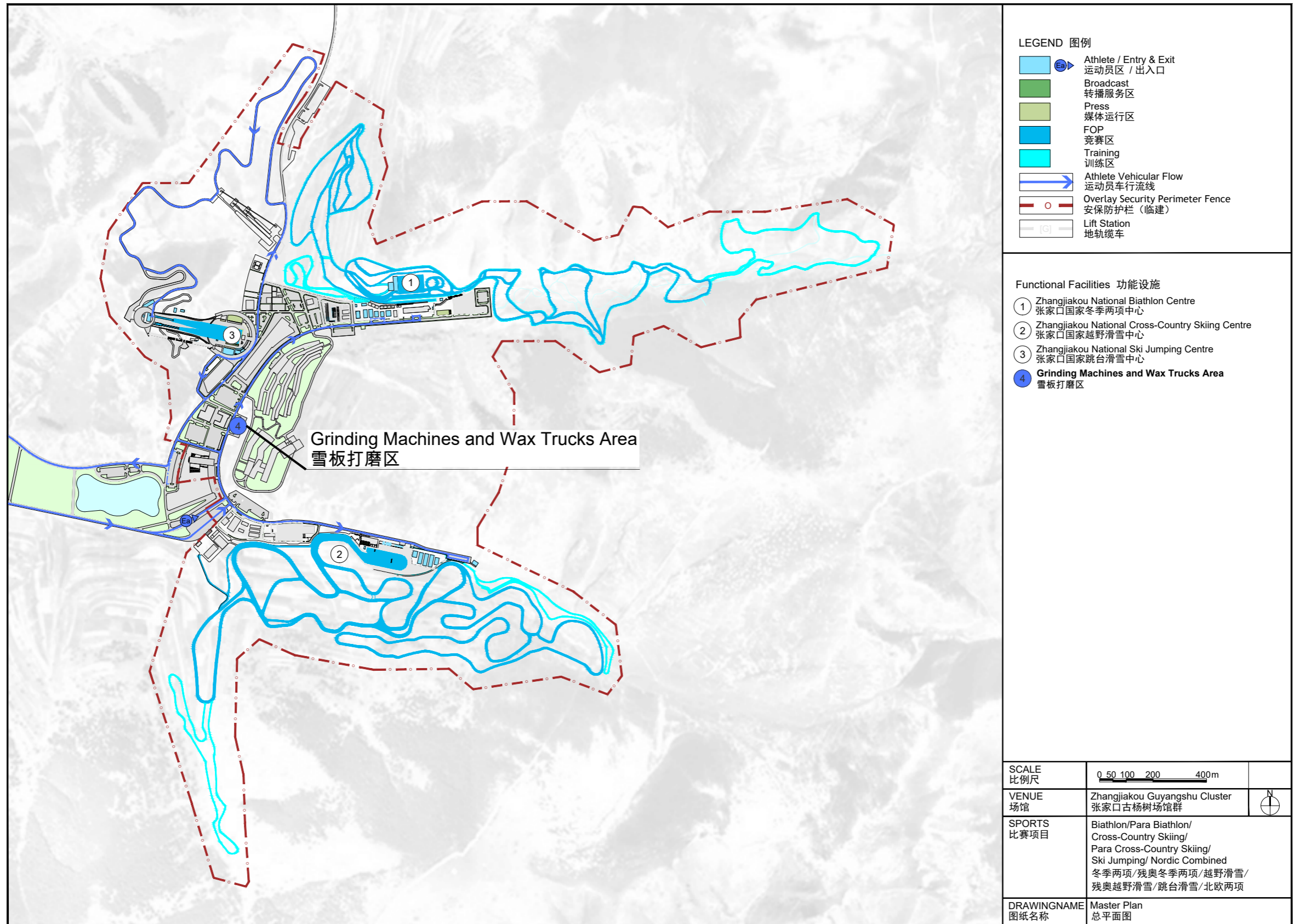
Beijing 2022 has sent a *Beijing 2022 NOC Wax Truck and Grinding Machine Survey* to each NOC for confirming the requirement in July 2021. Beijing 2022 endeavored to meet the requirements from each NOC according to the survey feedback and comprehensively assessed the fact and possibility of the venue.

Beijing 2022 will provide secured spaces and essential specifications and supply for grinding machines and wax trucks in the Guyangshu Venue Cluster. It is a common area inside the Security Perimeter Fence which will be available for all events including Biathlon, Cross-Country Skiing, Ski Jumping and Nordic Combined.

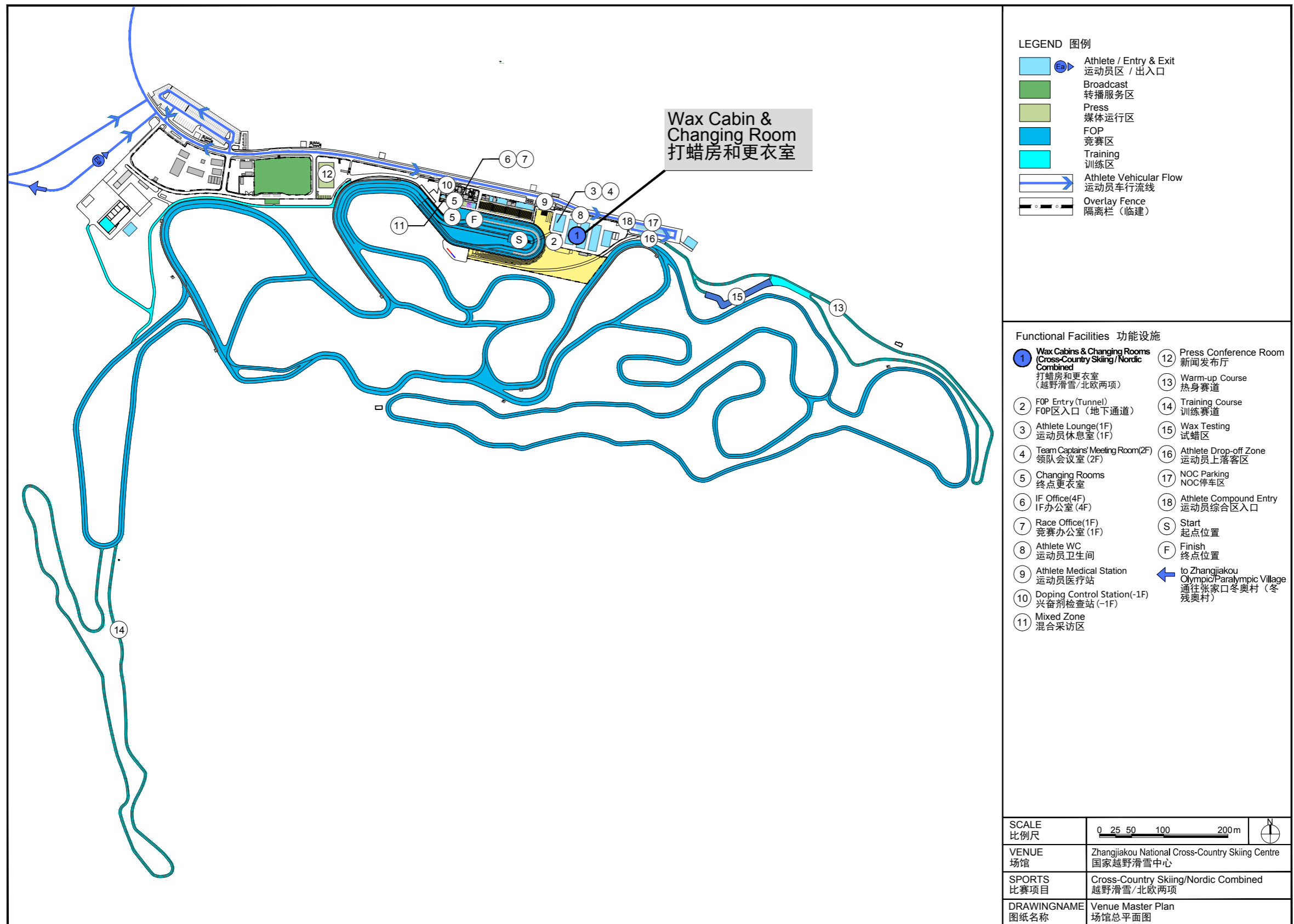
Please note that NOCs must order a special wax cabin on the Rate Card in order to bring grinding machines and wax trucks.

Please refer to the *Olympic Winter Games Beijing 2022 NOC Rate Card Catalogue* for detail information about the Non-standard Requests.

Zhangjiakou Guyangshu Cluster



Zhangjiakou National Cross-Country Skiing Centre



Wax Facilities for NOCs

Zhangjiakou National Ski Jumping Center

Ski Jumping/Nordic Combined

Ski Jumping and Nordic Combined (Ski Jumping) Cabins Allocation

The wax cabins are allocated by the FIS according to its principle of allocation as followed:

NOC Allocation Formula	Wax Cabin/NOC	Team Cabin/NOC	Total
1 to 3 athletes	1	0.5	1.5
4 athletes or more	1	1	2

NOCs can request additional wax cabins on the Rate Card portal at a cost. Beijing 2022 cannot guarantee the fulfillment of all requests due to the limited number of wax cabins available for rent at the venues.

Wax Cabin Specifications

The wax cabins will be in modules of 18 m².

Each wax cabin includes:

- A signage/number on the outside of the wax cabin for each NOC
- Locking device and 2 keys
- 1 table and 2 chairs
- Interior lighting
- Waste bin, broom and dustpan
- Wall ski-racks and wall shelf
- Electricity: 220V/60Hz, sockets
- Interior ventilator, 1 fire extinguisher and hanger
- Space heater
- Internal temperature: 20 °C
- Flooring material: Non-skid Fine-grain floor
- Free Wi-Fi

Beijing 2022 will not provide any other waxing tools or equipment for the wax cabins.

Location

Ski Jumping

The wax cabins are located in the athlete compound at the Zhangjiakou National Ski Jumping Centre and inside the Guyangshu Venue Cluster Security Perimeter Fence.

Due to limited space of the venue and there is no parking space in the wax cabins area.

Nordic Combined

The wax cabins are located in the athlete compound at the Zhangjiakou National Ski Jumping Centre and inside the Guyangshu Venue Cluster Security Perimeter Fence.

Due to limited space of the venue, there is no parking space in the wax cabins area.

For Grinding and Wax Trucks

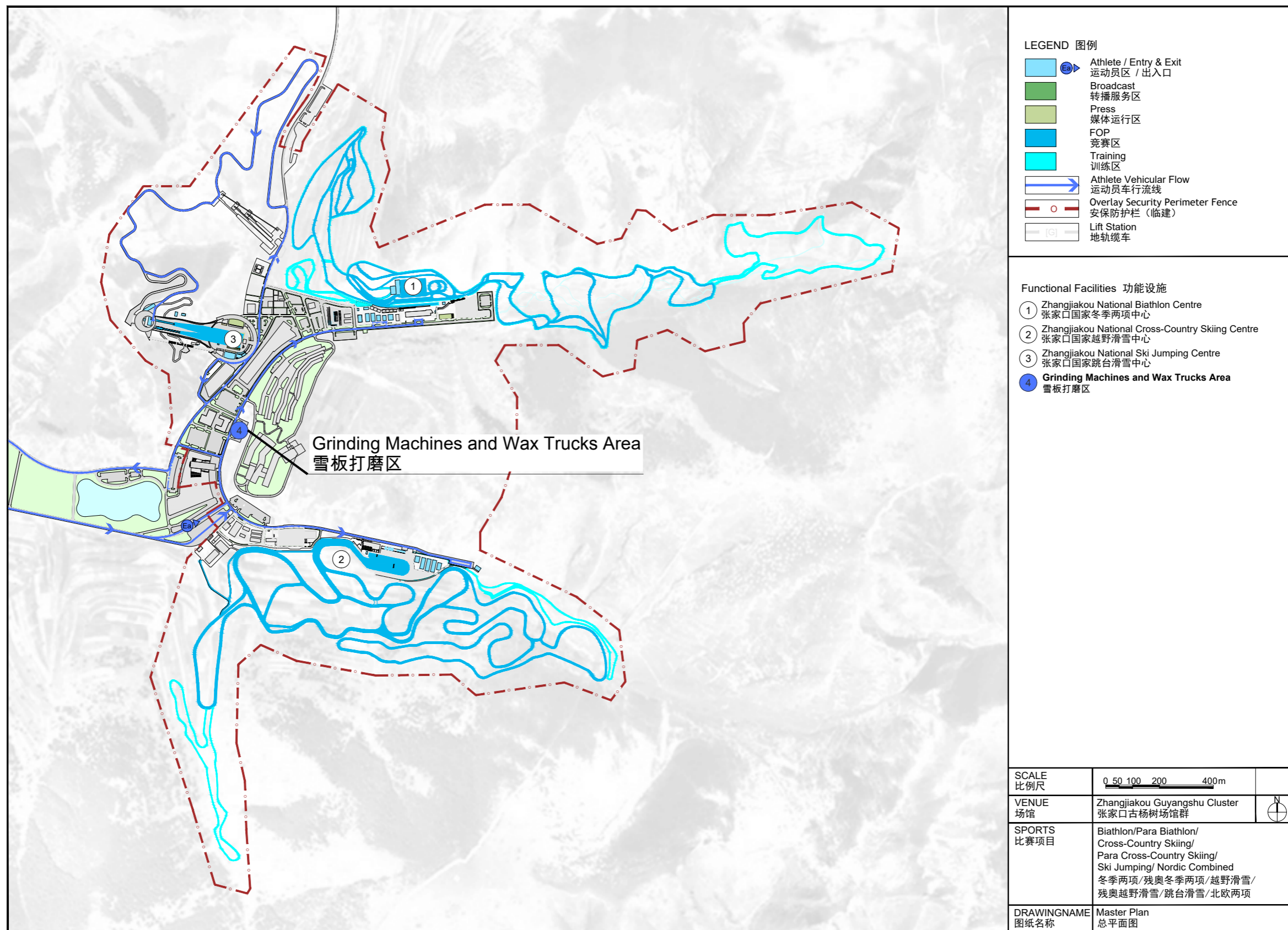
Beijing 2022 has sent a *Beijing 2022 NOC Wax Truck and Grinding Machine Survey* to each NOC for confirming the requirement in July 2021. Beijing 2022 endeavored to meet the requirements from each NOC according to the survey feedback and comprehensively assessed the fact and possibility of the venue.

Beijing 2022 will provide secured spaces and essential specifications and supply for grinding machines and wax trucks in the Guyangshu Venue Cluster. It is a common area inside the Security Perimeter Fence which will be available for all events including Biathlon, Cross-Country Skiing, Ski Jumping and Nordic Combined.

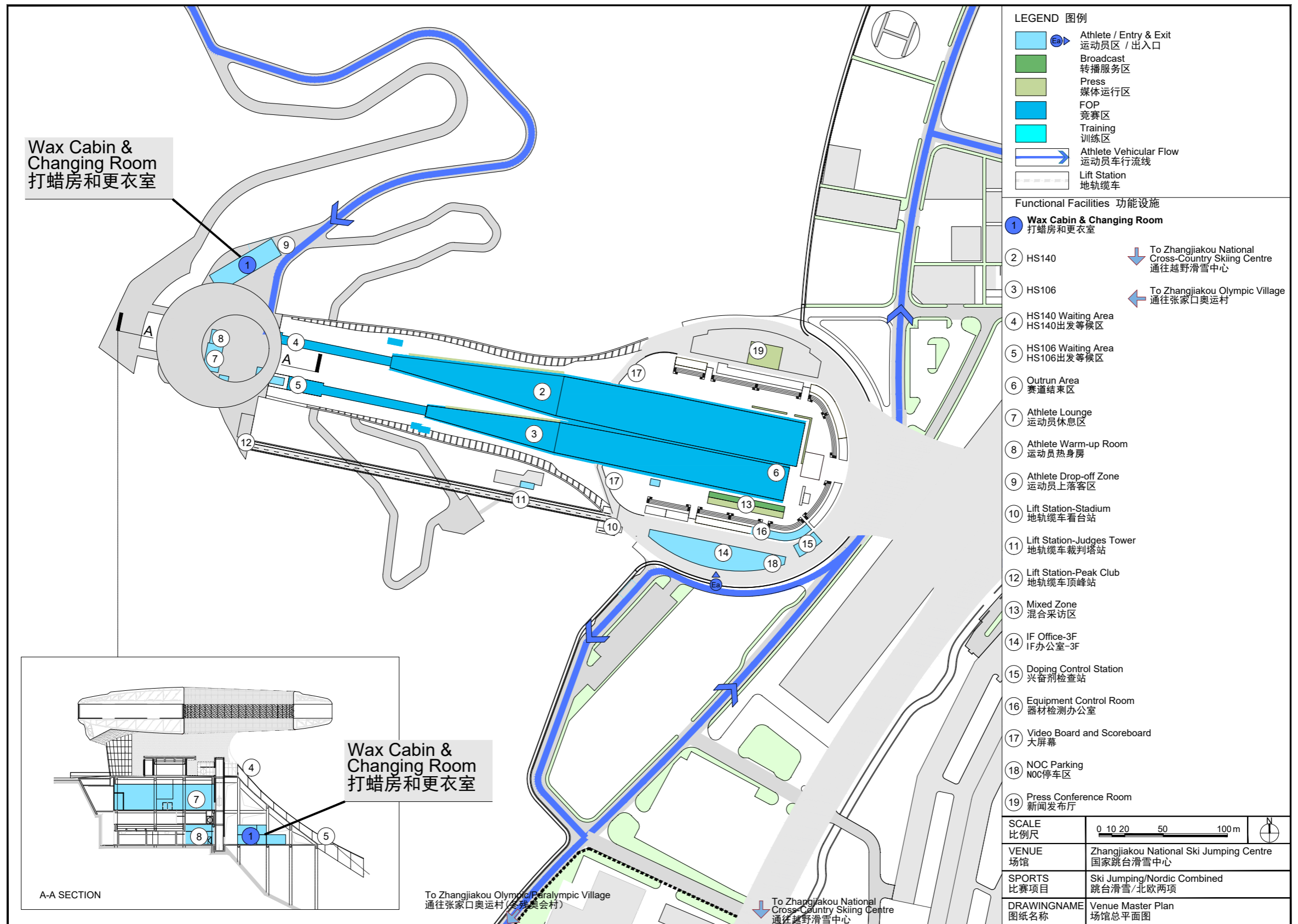
Please note that NOCs must order a special wax cabin on the Rate Card in order to bring grinding machines and wax trucks.

Please refer to the *Olympic Winter Games Beijing 2022 NOC Rate Card Catalogue* for detail information about the Non-standard Requests.

Zhangjiakou Guyangshu Cluster



Zhangjiakou National Ski Jumping Centre



Zhangjiakou Genting Snow Park

Freestyle Skiing/ Snowboard

Freestyle Skiing Cabins Allocation

The wax cabins are allocated by the FIS according to its principle of allocation as followed:

NOC Allocation Formula	Wax Cabin/NOC	Team Cabin/NOC	Total
1 to 4 athletes	0.5	-	0.5
5 to 8 athletes	1	-	1
9 to 12 athletes	1.5	-	1.5
13 to 17 athletes	2	-	2
18 athletes or more	2.5	-	2.5

Snowboard Cabins Allocation

The wax cabins are allocated by the FIS according to its principle of allocation as followed:

NOC Allocation Formula	Wax Cabin/NOC	Team Cabin/NOC	Total
1 to 4 athletes	0.5	-	0.5
5 to 8 athletes	1	-	1
9 to 12 athletes	1.5	-	1.5
13 to 17 athletes	2	-	2
18 athletes or more	2.5	-	2.5

NOCs can request additional wax cabins on the Rate Card portal at a cost. Beijing 2022 cannot guarantee the fulfillment of all requests due to the limited number of wax cabins available for rent at the venues.

Wax Cabin Specifications

The wax cabins will be in modules of 18 m².

Each wax cabin includes:

- A signage/number on the outside of the wax cabin for each NOC
- Locking device and 2 keys
- 1 table and 2 chairs
- Interior lighting
- Waste bin, broom and dustpan
- Wall ski-racks and wall shelf
- Electricity: 220V/60Hz, sockets
- Interior ventilator, 1 fire extinguisher and hanger
- Space heater
- Internal temperature: 20 °C
- Flooring material: Non-skid Fine-grain floor
- Free Wi-Fi

Beijing 2022 will not provide any other waxing tools or equipment for the wax cabins.

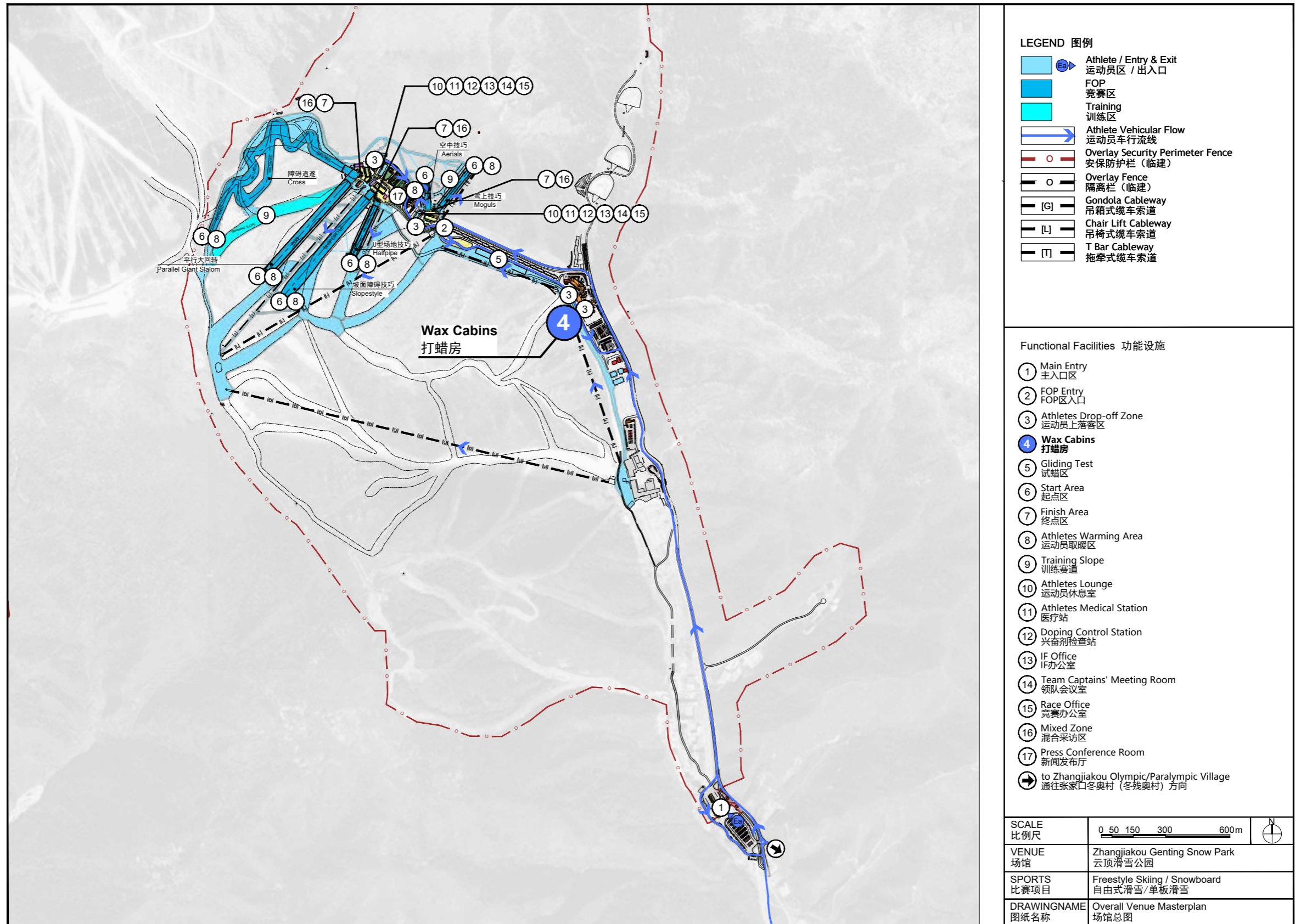
Location

The wax cabins are located in the south of Genting World and east of NO.5 lift, inside the Genting Snow Park Security Perimeter Fence.

For Grinding and Wax Trucks

Due to the existing limited venue construction condition and power supply capacity, Beijing 2022 will not provide space for grinding and wax trucks.

Zhangjiakou Genting Snow Park



LEGEND 图例

	Athlete / Entry & Exit 运动员区 / 出入口
	FOP 竞赛区
	Training 训练区
	Athlete Vehicular Flow 运动员车行流线
	Overlay Security Perimeter Fence 安保护栏 (临建)
	Overlay Fence 隔离栏 (临建)
	Gondola Cableway 吊箱式缆车索道
	Chair Lift Cableway 吊椅式缆车索道
	T Bar Cableway 拖牵式缆车索道

Functional Facilities 功能设施

①	Main Entry 主入口区
②	FOP Entry FOP区入口
③	Athletes Drop-off Zone 运动员上落客区
④	Wax Cabins 打蜡房
⑤	Gliding Test 试蜡区
⑥	Start Area 起点区
⑦	Finish Area 终点区
⑧	Athletes Warming Area 运动员取暖区
⑨	Training Slope 训练赛道
⑩	Athletes Lounge 运动员休息室
⑪	Athletes Medical Station 医疗站
⑫	Doping Control Station 兴奋剂检查站
⑬	IF Office IF办公室
⑭	Team Captains' Meeting Room 领队会议室
⑮	Race Office 竞赛办公室
⑯	Mixed Zone 混合采访区
⑰	Press Conference Room 新闻发布厅
	to Zhangjiakou Olympic/Paralympic Village 通往张家口冬奥村 (冬残奥村) 方向

SCALE 比例尺	0 50 150 300 600m	
VENUE 场馆	Zhangjiakou Genting Snow Park 云顶滑雪公园	
SPORTS 比赛项目	Freestyle Skiing / Snowboard 自由式滑雪/单板滑雪	
DRAWINGNAME 图纸名称	Overall Venue Masterplan 场馆总图	

Big Air Shougang

Freestyle Skiing/ Snowboard

Freestyle Skiing Cabins Allocation

The wax cabins are allocated by the FIS according to its principle of allocation as followed:

NOC Allocation Formula	Wax Cabin/NOC	Team Cabin/NOC	Total
1 to 4 athletes	0.5	-	0.5
5 to 8 athletes	1	-	1
9 to 12 athletes	1.5	-	1.5
13 to 17 athletes	2	-	2
18 athletes or more	2.5	-	2.5

Snowboard Cabins Allocation

The wax cabins are allocated by the FIS according to its principle of allocation as followed:

NOC Allocation Formula	Wax Cabin/NOC	Team Cabin/NOC	Total
1 to 4 athletes	0.5	-	0.5
5 to 8 athletes	1	-	1
9 to 12 athletes	1.5	-	1.5
13 to 17 athletes	2	-	2
18 athletes or more	2.5	-	2.5



NOCs can request additional wax cabins on the Rate Card portal at a cost. Beijing 2022 cannot guarantee the fulfillment of all requests due to the limited number of wax cabins available for rent at the venues.

Wax Cabin Specifications

The wax cabins will be in modules of 18 m².

Each wax cabin includes:

- A signage/number on the outside of the wax cabin for each NOC
- Locking device and 2 keys
- 1 table and 2 chairs
- Interior lighting
- Waste bin, broom and dustpan
- Wall ski-racks and wall shelf
- Electricity: 220V/60Hz, sockets
- Interior ventilator, 1 fire extinguisher and hanger
- Space heater
- Internal temperature: 20 °C
- Flooring material: Non-skid Fine-grain floor
- Free Wi-Fi

Beijing 2022 will not provide any other waxing tools or equipment for the wax cabins.

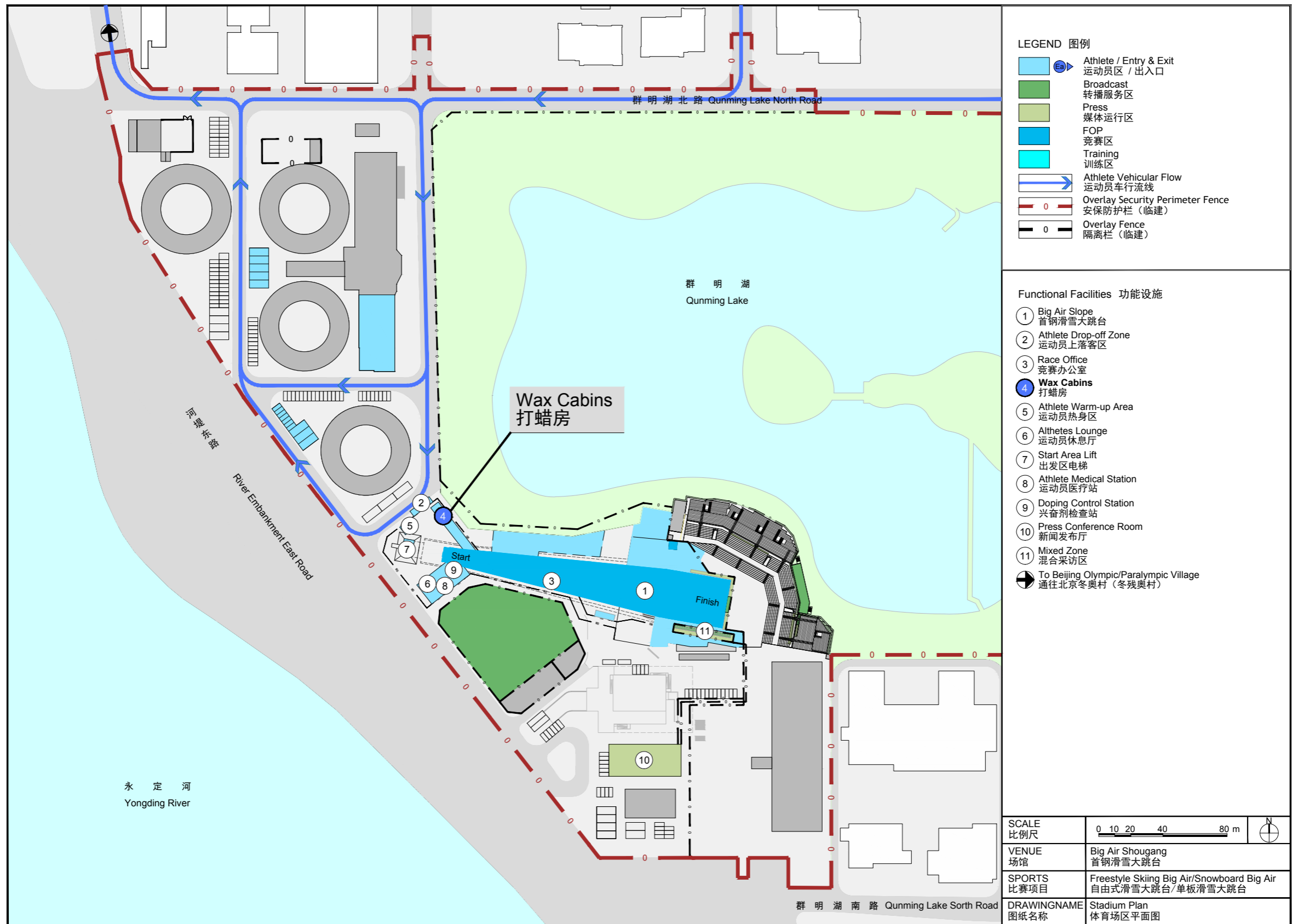
Location

The wax cabins are located under the Big Air ramp and next to the warm-up tent, inside the Big Air Shougang Security Perimeter Fence.

For Grinding and Wax Trucks

Due to the existing limited venue construction and low requirement, Beijing 2022 will not provide space for grinding and wax trucks.

Big Air Shougang



Wax Facilities for NOCs

