

Luge

Team Leaders' Guide

December 2021



Welcome

On behalf of the Beijing 2022 Luge team, it is a pleasure to extend a warm welcome to all the athletes and team officials in Beijing.

With our commitment to deliver a green, inclusive, open and clean Games, the Yanqing National Sliding Centre is the one of the most complex construction project among all competition venues with the highest technology design difficulty. The track is divided into 54 refrigeration units, with a total length of 1,975 meters and a vertical drop of more than 121 meters composing of 16 curves with different angles and gradients.

Despite the challenges we are facing due to the global COVID-19 pandemic, I believe the spirit of sport will heal, inspire and encourage all the participants and audience during the Olympic Winter Games Beijing 2022. You may find essential information about your discipline, the venue and all the services and facilities in this Guide that have been prepared to support you during your time in Beijing.

We look forward to your continuous support in helping us stage a joyful rendezvous upon pure ice and snow. With its rich history and sophisticated modernity, traditional culture and modern civilization, Beijing stands ready to become the first city in the world to host both the Summer and Winter editions of the Olympic Games, and to welcome friends from all over the world.

Good luck!

Xudong ZHANG
Sport Manager of Luge
Beijing 2022

About the Team Leaders' Guide

All information, schedules and maps provided in this Guide was correct at the time of its publication in December 2021; however, please note that details may change between this date and the Games. For further updated information, please pay close attention to the latest policy released by related Beijing 2022 functional areas and the updated edition of this Guide for reference.



CONTENTS

Welcome	2
Olympic Identity and Accreditation Card (OIAC)	7
Beijing 2022 Accreditation Card Sample	7
Access Codes and Symbols	8
Spectating Athletes and Team Officials Policy	9
Same Discipline Athletes (SDA) & Different Discipline Athletes (DDA)	9
Transport	10
TA Transport System	10
Olympic Village Transport	11
Competition and Training Shuttle Bus Services	13
Transfer of Equipment from/to Competition Venues	14
Competition Information	16
Rules	16
Protests	17
Technical Delegates	18
Technical Officials	19
Competition Management Team	21
Team Captains' Meetings and Draws	22
Training	23
Late Athlete Replacement Policy for the Olympic Winter Games Beijing 2022	24
Sport Information Desk/Sport Information Centre (SID/SIC)	25
Weather Services	26
Enforcement of Rule 50 of the Olympic Charter	27
Sport Services	28
Venue and Operational Facilities	28
Venue Access	30
Radio Frequency – Spectrum Management	31
Interpretation Services	34

Doping Control	35
General Principles	35
Games-time Operations	37
Safety	38
Safety Concerns	38
Emergency Services	39
Security	40
Access Control to Competition and Non-Competition Venues	41
Venue Security Perimeters	42
Transport and Security	43
List of Restricted and Prohibited Items	44
Medical Services	48
General Aspects	48
Medical Services at the Venues	49
Polyclinics	50
Olympic Hospitals	51
Emergency Medical Services and Transport	52
Interpretation Services	53
Public Health	54
Ceremonies	55
Opening and Closing Ceremonies	55
Victory Ceremonies	56
Medal Boxes and Diplomas	57
Mixed Zone and Press Conferences	58
General Principles for Interview Facilities	58
Mixed Zone Operations	59
Press Conferences Operations	61
Principles and COVID-19 Countermeasures	62

Appendix	63
Beijing 2022 Olympic Winter Games Competition Schedule Version 12	64
Beijing 2022 Olympic Winter Games Training Schedule	65
Beijing 2022 Olympic Winter Games Victory Ceremonies Schedule	66
Late Athlete Replacement Policy for the Olympic Winter Games Beijing 2022	67
Yanqing National Sliding Centre Master Plan	69
Yanqing National Sliding Centre Start House Plan	70
Yanqing National Sliding Centre Finish House L1 Plan	71
Yanqing National Sliding Finish House L2 Plan	72
Yanqing National Sliding Centre Finish House L3 Plan	73
Yanqing National Sliding Centre Sled Storage Container Area\Fleet Garage Building Plan	74
Yanqing National Sliding Centre Detail Plan	75
Yanqing Olympic Village Master Plan	76
TA Transport	77

Olympic Identity and Accreditation Card (OIAC)

Beijing 2022 Accreditation Card Sample

BEIJING 2022™
Ac
国家(地区)奥委会

MENG DONGXUE
梦冬雪
CHEF DE MISSION
代表团团长
PEOPLE'S REPUBLIC OF CHINA
中国

1234567-01

ALL **OLV** **OFH** **BRO** **MPC**
ZPC

H 2 4 5 6 R

By issuing this Olympic Identity & Accreditation Card (OIAC), the International Olympic Committee (IOC) and the Beijing Organising Committee for the 2022 Olympic and Paralympic Winter Games (Beijing 2022) have granted me rights relating to my participation in the 2022 Olympic Winter Games in Beijing, People's Republic of China (Games), in particular access to services and areas connected with the functions of the Games. I agree to comply with the Accreditation Terms and Conditions applicable to the Games available on Beijing 2022's website (see <https://olympics.com/beijing-2022/en/olympic-accreditation>), which include, without limitation, requirements and important information about Compliance with the Olympic Charter, the IOC Code of Ethics, the Playbooks and any further regulations, decisions and/or instructions issued by Beijing 2022, the Chinese authorities or the IOC. I consent to the measures contained in the Playbooks (including any update thereof) aiming at protecting the health of the Games' participants and ensuring the safe staging of the Games. Acknowledgment and acceptance of risks while participating at the Games. Processing of my personal data - Capture and use of images for the Games. I will visibly wear this Card at all times and shall not pass it on or transfer it to any other person. This Card is the property of the IOC and can be removed with immediate effect in the IOC's full discretion, in particular in case I do not respect and/or refuse to agree with the Accreditation Terms and Conditions.

Four le cas échéant, veuillez consulter les Conditions générales d'accréditation applicables aux Jeux olympiques à l'adresse suivante (<https://olympics.com/beijing-2022/en/olympic-accreditation>)

奥林匹克注册卡由国际奥林匹克委员会（国际奥委会）和北京2022年冬奥会和冬残奥会组织委员会（北京冬奥组委）颁发。授予本人参加中华人民共和国北京举办的第24届冬季奥林匹克运动会的特殊权利，特别是进入冬奥会中提供服务的特定区域的权力。本人同意遵守北京冬奥组委网站（<https://olympics.com/beijing-2022/en/olympic-accreditation>）中公布的适用于冬奥会的注册条款和条件，其中包括但不限于以下要求和重要信息：遵守《奥林匹克宪章》《国际奥委会道德准则》《奥林匹克运动手册》以及北京冬奥组委、中国有关国际奥委会授权的网站发布的规定、决定和/或指示。遵守《奥林匹克运动手册》（包括奥林匹克运动手册）中旨在保护冬奥会参赛人员健康和冬奥会安全举办的各项措施。了解并接受参加冬奥会的风险。接受对个人数据的处理。接受冬奥会图像采集和使用。本人承诺将 visibly 佩戴此卡于冬奥会期间，不涂改或转让此卡。此卡为国际奥委会财产，可以不经国际奥委会安全决定，即刻撤销此卡，尤其是当本人不遵守和/或拒绝同意注册条款和条件的情况下。

梦冬雪
代表团团长
中国
110102198504220850
00000000
1234567-01

ALL	ALL COMPETITION/TRAINING VENUES 所有竞赛场馆和训练场馆	OLV	OLYMPIC VILLAGE 冬奥村
OFH	OLYMPIC FAMILY HOTEL 奥林匹克大家庭酒店	BRO	INTERNATIONAL BROADCAST CENTRE & NANGJIAOJI BROADCAST BROADCAST CENTRE 国际广播中心、国家广播中心
MPC	MAIN PRESS CENTRE 主新闻中心	ZPC	ZHANGJIAPING WOLONGS PRESS CENTRE 张纪平卧龙新闻中心
2	ATHLETE PREPARATION AREAS 运动员准备区	4	PRESS AREAS 媒体工作区
5	BROADCAST AREAS 转播工作区	6	OLYMPIC FAMILY AREAS 奥林匹克大家庭区
R	RESIDENTIAL ZONE 奥运村居住区		FIELD OF PLAY 比赛场地
OLV	VILLAGE DINING 冬奥村餐饮	T3	ATHLETE STAKEHOLDER TRANSPORT SYSTEM 运动员及随队官员专用班车
T3	ATHLETE STAKEHOLDER TRANSPORT SYSTEM 运动员及随队官员专用班车		

H 2 4 5 6 R

Access Codes and Symbols

Venue codes and symbols printed on the front side of the card indicate access to competition and/or non-competition venues. A full description of the codes is available on the reverse side of the card.

Accreditation zones are secured areas reserved only for accredited persons who have access to corresponding zones in which they perform their Games-time functions.

Venue zone access rights are printed on the OIAC using colour and alphanumeric codes. The accreditation zones inside the competition venues and Olympic Villages are as follows:

Access Code	Accessible Areas
BLUE	Field of Play (FOP) Operational areas (BOH) General circulation areas (Front of House [FOH], BOH)
RED	Operational areas (BOH) General circulation areas (FOH, BOH)
WHITE	General circulation areas (FOH)
"2"	Athlete preparation areas
"4"	Press areas
"5"	Broadcast areas
"6"	Olympic Family areas
"R"	Residential Zone (RZ) of the Olympic Village

Although included in this zone list, some particular areas inside the venue may be considered and managed as restricted areas, and the OIAC itself does not grant access to these areas.

Supplementary Access Control Devices (SACD), such as stickers, passes, bibs, armbands and tickets, will be required to enter the Field of Play, the Mixed Zone and the Ceremony areas.

Spectating Athletes and Team Officials Policy

Same Discipline Athletes (SDA) & Different Discipline Athletes (DDA)

Spectator tickets will only be available to residents of China's mainland who meet the conditions of COVID-19 control. Athletes and Team Officials will not have access to ticketed spectator areas.

Access to the accredited areas such as Same Discipline Athletes (SDA) seating or stand area is allowed upon the presentation of an OIAC. SDA are allowed to utilise TA service at the Yanqing Olympic Village TA Transport Mall to the venue. However, priority will be given to competing/training Athletes and their Team Officials.

For Different Discipline Athletes (DDA), tickets will be provided for spectating.

Transport

***Transport information in this Chapter and transport service maps in the Appendix were only for reference by the time of this Guide published. Please refer to the updated information in the *Athletes and Team Officials Transport Guide* which will be published in January, 2022 by the Beijing 2022 Transport Service Team.**

TA Transport System

The operation date of the TA transport system for Athletes and Team Officials is from January 27 after the opening of Yanqing Olympic Village. The system includes transport services between the Olympic Villages and competition and training venues in each zone; transport services between the Olympic Villages; transport services for Additional Team Officials; cross-zone transport service.

Olympic Village Transport

Olympic Village NOC Parking Lot

Each Olympic Village (OLV) will set up parking lots for NOC. Yanqing OLV parking lot is located in the northwest of Yanqing OLV.

Cross-zone Shuttle Bus

Beijing 2022 will provide TA transport services across the Beijing Olympic Village, Yanqing Olympic Village and Zhangjiakou Olympic Village. TA transport services connect the Olympic Villages in three zones.

Route	Origin	Time of Departure	Journey Length	Travel Time	Via	Time of Departure	Journey Length	Travel Time	Waiting Time	Destination	Time of Arrival	Journey Length in Total	Travel Time in Total
TA	Zhangjiakou Olympic Village	8:00	84 km	69 minutes	Yanqing Olympic Village	9:20	106 km	115 minutes	10 minutes	Beijing Olympic Village	11:15	190 km	195 minutes
		14:00	84 km	69 minutes		15:20	106 km	115 minutes	10 minutes		17:15	190 km	195 minutes
TA	Beijing Olympic Village	8:00	106 km	115 minutes	Yanqing Olympic Village	10:05	84 km	69 minutes	10 minutes	Zhangjiakou Olympic Village	11:15	190 km	195 minutes
		14:00	106 km	115 minutes		16:05	84 km	69 minutes	10 minutes		17:15	190 km	195 minutes

Transport Services for Additional Team Officials

TA shuttle bus service will be provided between the Olympic Village and the Additional Team Officials' official accommodation sites.

Route	Origin-Destination	Operating Period	Frequency	Travel Time/Journey Length	Note
TA	Marriott Hotel Beijing -Yanqing Olympic Village	January 27 -February 23	High: 60 minutes (4 hours to 1 hour before the first competition session)	49 minutes/38 km	1. Clean to Clean 2. Start service from 4 hours before first competition/training of day session; end service at 2 hours after the last competition/training of day
TA	Element Beijing -Yanqing Olympic Village	January 27 -February 23	Low: 120 minutes (Other period of time)	49 minutes/38 km	3. Will stop at Banquan first, and go to Yanqing Olympic Village, without transfer

Competition and Training Shuttle Bus Services

TA shuttle buses in Yanqing Zone will run between the Yanqing Olympic Village (YVL) and the competition venues in the Yanqing Venue Cluster to ensure the travel of Athletes and their Team Officials participating in the competition and training.

Route Code	A-Y-3	Journey Length	4 km
Origin	YVL	Travel Time	10 minutes
Destination	Yanqing National Sliding Centre	Operation Period	First open training day -February 20
Capacity	16	Operation Hours	Three hours before the first competition until two hours after the last competition
Frequency	High: 15 minutes Low: 60 minutes		

High Frequency

1.5 hours before the start of training/competition and 1 hour after the training/competition.

Low Frequency

Other period of time.

Transfer of Equipment from/to Competition Venues

Service Time

A total of 55 days of service is provided, which starts on January 21, 2022 (14 days before the Opening Ceremony of the Olympic Winter Games Beijing 2022) and ends on March 16, 2022 (3 days after the Closing Ceremony of the Beijing 2022 Paralympic Winter Games).

Scope of Service

The transfer of sports equipment between airports and venues as well as between venues is covered by our service.

Transfer of Sports Equipment from Airports to Venues

Upon arrival, if Athletes and Team Officials have sports equipment that is to be transferred directly from airports to venues, they are to consign their equipment to Beijing 2022 baggage delivery team at designated Baggage Claim and Delivery Area. Beijing 2022 baggage delivery team will check the baggage, confirm such related information with the NOC, baggage quantities and destinations, tag the baggage, and issue a consignment receipt. After consignment, Beijing 2022 logistics trucks will deliver these consigned sports equipment to Remote Material Screening Site (RMSS) for security checks, where all problem baggage will be temporarily stored until problems are solved by NOC representatives arriving afterwards, and the rest of the baggage will be delivered to their respective venues for a sports equipment handover process with consignment receipts.

Transfer of Sports Equipment Between Venues

Transfer of sports equipment between venues is prearranged according to Competition Schedule. Any additional equipment transfer needs to have advance reservation at logistics service desks of NOC Service Center in the Olympic Villages before 10 a.m., the previous day.

Transfer of Sports Equipment from Venues to Airports

Upon departure, sports equipment to be delivered directly from venues to airports needs to have advance reservation (specific time to be determined) at logistics service desks of NOC Service Center in the Olympic Villages. Beijing 2022 baggage delivery team will arrive at appointed time for baggage consignment. They will check the baggage, confirm such information with the NOC, corresponding flights and baggage quantities, tag the baggage, and issue a consignment receipt. With the consignment receipt, Athletes and Team Officials can claim their consigned sports equipment from Beijing 2022 baggage delivery team at designated baggage storage area (specific location to be determined).

Competition Information

Rules

The International Luge Federation (FIL) Rules 2020 approved by the FIL Congress regarding international Luge competitions shall apply to the Olympic Winter Games Beijing 2022 Luge competitions. In the event of discrepancies between different versions, the German version should prevail (IRO Section 13, point 1).

Any issues or incidents not covered by the rules are handled as follows:

- Cases of a general nature are resolved in accordance with the *Olympic Charter*.
- Technical questions are resolved by the Jury or IF Delegates according to the FIL rules.

The content of this Guide is for information purposes only. In case of discrepancies with the above-mentioned Rules and Regulations, the latest *Olympic Charter* and FIL rules before the Games shall apply.

Protests

- Protests must be made in writing and must be dated and signed by the Team Captain or the Team Captain's Representative or the Athlete.
- The protest, accompanied by EUR 50 or RMB equivalent, must be given to a Jury Member when it is submitted.
- Verbal notification of the intention to submit a protest must be given within 5 minutes and the written protest must be submitted within 10 minutes after the conclusion of the official training, the competition run, or other protest reasons. In case of a disqualification, the written protest must be submitted within 10 minutes after receipt of the report according to § 11, 1.2.7 of the *IRO International Luge Regulations 2020 Edition*.
- The Jury decides on all protests.

Technical Delegates

Position	Name	Nationality
Technical Delegate	Claire DELNEGRO	USA
Technical Delegate	Hansjoerg RAFFL	AUT

Technical Officials

Technical Officials

Position	Name	Nationality
Jury Chairman	Mark GRIMMETTE	USA
Jury Members	Atis STRENGA	LAT
	Tatjana HÜFNER	GER
Doping Control	Dr.Christian KRÄHE	GER
	Dr. Eugene BYRNE	USA
Finish Control	Maciej KUROWSKI	POL
Start Control	Frederic ZIMNY	USA
Track Control/EB Member	Jieun PARK	KOR
Track Control/EB Member	Harald STEYRER	AUT
Track Control	Yuriy HAYDUK	UKR
Track Control	Markus ASCHAUER	GER
Technical Delegate	Reto GILLY	SUI
Technical Delegate	Yi YAN (Emma)	CHN

Race Officials

Position	Name	Nationality
Race Director	Maria Luise RAINER	ITA
	Dawei WU	CHN
Assistant Race Director	Chunzhi LI	CHN
Chief of Race Office	Li WANG	CHN
Start Leader	Weijing TANG	CHN
Finish Leader	Xuan GAO	CHN
Chief of Track	Yongsheng WANG	CHN

Competition Management Team

Position	Name
Sport Manager	Xudong ZHANG
Deputy Sport Manager	Dawei WU
Sliding Sports Expert	Normunds KOTANS (LAT)
Sport Assistant	Jueyin ZHENG
Sport Coordinator	Runzhou LI

Team Captains' Meetings and Draws

The Team Captains' Meetings and Draws will be held at the fourth floor of the Finish House according to the schedule and FIL rules as follows below. The first Luge Team Captains' Meeting will be held on January 31, 2022. The locations and schedule may be subject to change.

Schedule

Date	Name	Event
February 4	12:30-14:00	Men
February 6	11:30-12:30	Women
February 8	12:00-13:00	Doubles, Team Relay

Athletes will be seeded in groups (A: 1-12; B: 13-24; C: 25-36 and 37 to last start number) based on the individual disciplines results from the World Cup point ranking of the three previous World Cup races from a minimum of three different tracks and a minimum of two different nations.

Supplementary Access Control Devices (SACD)

SACDs (such as armbands) are distributed to Team Captains by the Beijing 2022 SPT at the Team Captains' Meetings. These devices grant access to the FOP within the 2 and Blue.



Training

Official Training

Athletes and Team Officials can access their discipline's venues with validated accreditation.

All scheduled training sessions are open to the accredited media except that if NOCs refuse to open training.

For more details, please refer the training schedule of Olympic Winter Games Beijing 2022 in the Appendices of this Guide.

Late Athlete Replacement Policy for the Olympic Winter Games Beijing 2022

Please refer to the Appendices in this Guide for detailed reference.

Sport Information Desk/Sport Information Centre (SID/SIC)

The Sport Information Desk (SID) will be set up at each competition venue. The Sport Information Centre (SIC) will be set up in the NOC Service Centre in each Olympic Village. The SIC and SID will provide competition and training information to all NOCs and address questions/requests of Athletes and Team Officials concerning the Sport.

Training Schedule, Competition Schedule, Start Lists, Results Lists, Official Communication, Sport Communication, Weather Information, Team Leaders' Guide, Technical Officials' Guide, other sport information/publications and real-time updates during the day, will be distributed through both SIC and SID.

Weather Services

Weather Information will be provided mainly through weather report on INFO and myINFO in PDF version, the Beijing 2022 Olympic and Paralympic Winter Games Weather Service website at https://olympic.weather.com.cn/en_dongao/, and briefings at Team Captains' Meetings and at the Field of Play. Routine weather information will also be available at Sport Information Desks.

Historical Weather Data of Yanqing Zone

	February	March
Normal average temperature	-4.1°C (Range: -10.2°C~3.3°C)	2.8°C (Range: 3.6°C~9.8°C)
Monthly mean precipitation	3.4 mm	9.2 mm
Total duration for precipitation	2.2 days	3.8 days
The recent 10-year (2012-2021) average temperature during the Olympic period	-3.8°C	
The extremely High temperature during the Olympic period from 1981 to 2021	19.7°C (February 20, 2021)	
The daily maximum precipitation during the Olympic period from 1981 to 2021	12.6 mm (February 14, 2020)	

Enforcement of Rule 50 of the Olympic Charter

Please refer to the IOC website for detailed reference:

<https://olympics.com/ioc/news/ioc-athletes-commission-s-recommendations-on-rule-50-and-athlete-expression-at-the-olympic-games>

Sport Services

Venue and Operational Facilities

For the exact locations, please refer to the maps in the Appendices of this Guide.

Venue

Transportation of Sleds

There is space on Village transportation services for luge sleds.

Workspace at Village

In the Village, NOCs will have space for minor sport equipment maintenance and repair. All workshops have ventilation and are equipped with lighting and electricity. Sport equipment maintenance and repairs are prohibited inside residential units.

Athletes' Lounge

The Athletes' Lounge is located on the first floor underground of the Start House 1. Limited food and beverage services are offered.

Athlete Warm-up Area

The Warm-Up Area is located on the second floor of both the Start House 1 & 2.

Athlete Medical Services

Athlete Medical Services are located at the Start House 1 and Finish House.

Athlete Seating

Seating for Athletes and Team Officials is available in the grand stands at the Start House 1. These seats are not ticketed and are allocated on a first-come, first-served basis.

Toilets

Toilets are located in the Start House 1 & 2 and the Finish House.

Sled Work Stations

Each NOC has a workspace (tables) in the preparation area at the Start House 1 and Start House 2.

FIL Mechanic

The FIL-appointed mechanic has a workspace with equipment located near the Start House 1.

FIL Technical Control

The FIL Technical Control Room is located on the First Floor of the Finish House.

Video Filming

If a team wishes to undertake its own technical filming in a competition venue during the competition, it may do so from the athlete and spectator seating area using non-professional video cameras.

Teams may also film during training sessions using non-professional cameras. For further guidelines regarding filming at the competition venues, NOCs should refer to the IOC's Guidelines for Technical Filming, which is available on the IOC NOC net.

All such film material may be used solely for internal viewing. And The filming at the venue during the training sessions must comply as well with IF rules.

Lost and Found

Found property will be kept in the Race Office.

Operational Facilities

Jury Office

The Jury Office is located in the Start House 1 and the Finish House.

Start Lists

Start lists, results and other competition information are available in the Team Captains' Meeting Room.

Venue Access

Athletes' and Officials' Entrance

The Athletes' and Officials' entrance to the Yanqing National Sliding Centre adjacent to the athletes' drop-off zone.

Radio Frequency – Spectrum Management

During the Beijing 2022 Olympic and Paralympic Winter Games, all NOC users (including teams and athletes) planning to use radio equipment in the Olympic venues and special control areas, shall register and submit frequency applications in the Spectrum Order Portal (SOP, <https://spectrum.beijing2022.cn>) by December 31, 2021. Once an application has been reviewed and approved, the Radio Equipment Frequency License will be issued by the Ministry of Industry and Information Technology of the People’s Republic of China to the user. Frequency must be used in accordance with the requirements indicated on the frequency license. All users are encouraged to apply early due to the limited availability of radio resources within the venues. The approval rate is higher in the normal period of frequency application (from January 1 to June 15, 2021).

Period	Order Period	Frequency Approval Period	Description
Normal Period	January 1-June 15, 2021	Before October 15, 2021	Strongly recommend users to apply in this period. Spectrum applications received during this period will be processed for batch approval without prioritizing the time of application.
Cut-off	June 16-30, 2021		Data review
Late Period	July 1-November 30, 2021	Before January 15, 2022	The application process is based on first-come-first-served basis and there is no guarantee that the frequency of applications will be approved.
Cut-off	December 1-31, 2021		Data review
Extraordinary Application Period (Games time)	January 1-March 13, 2022	Games-time	Only spectrum requests under urgent circumstances will be eligible. Availability is low.

Testing and Tagging

After arriving in China, NOC users who have obtained the frequency license are required to take their radio equipment to the designated locations for testing by the technical agency designated by Beijing 2022. The agency staff will test the radio frequency parameters of the equipment to ensure that it matches the specifications outlined in the frequency license, and pasted a Special Tag for the equipment that passes the tests. Then, the radio equipment can be used strictly following the time and area requirements indicated on the Special Tag.

The specific time and location for testing and tagging will be published on the SOP.

Equipment Inspections at Venue Entry

All radio transmitting equipment shall be inspected for authorisation by security staff before entering the venues. Equipment without the Special Tag will not be allowed into the venues (except for the equipment exempted from testing and tagging specified in Section 4.1 of the Spectrum Management Plan). In order to avoid delay for entry, please make sure to complete the testing and tagging process before arriving at the venue entrance.

Interference

Radio monitoring will be conducted to identify and prevent interference and illegal use of unlicensed frequencies. In case of radio interference, please inform the venue staff in time and cooperate to identify and eliminate the interference. Meanwhile, it should also be emphasized that users shall avoid the unauthorised use of radio spectrum.

For more details, please refer to the **Spectrum Management Plan for the Beijing 2022 Olympic and Paralympic Winter Games** published on the official website of Beijing 2022.

Special note1: Cameras with wireless transmission modules (including 2.4GHz and 5.8GHz bands) should be regarded as “Wireless Camera”. Users shall submit frequency applications for those cameras, obtain the frequency licenses and have them tested and pasted with a Special Tag before entering the venues.

Special note2: Frequency applications are needed for using wireless routers and other radio transmitting equipment to set up WLAN access point (AP) in the venues. Those equipment can only be brought into the venues after they are issued a frequency license, tested by the designated agency and pasted a Special Tag. Except for special requirement, it is strongly recommended that users access WLAN network provided by Beijing 2022 or by public mobile communication

operators, and the frequency applications for private WLAN APs or hotspots may not be approved.

Special note3: After entering the Olympic venues and special control areas, public mobile communication terminals (mobile phones), wireless internet cards, laptops, and tablet computers shall not be used as wireless LAN hotspots; the Bluetooth function of wearable smart devices such as public mobile communication terminals (mobile phones), camera wireless remote-control devices, smart watches, smart bracelets, Bluetooth headsets, etc. shall be switched off.

Interpretation Services

Beijing 2022 provides volunteer interpretation services for athletes' interviews at the Mixed Zone in the competition venues. Volunteer interpretation services in English will be provided upon request at the Doping Control Stations and Medical Stations, and over-the-phone interpretation in selected languages will be available via My 2022 App.

Professional interpreters provide interpretation services for official press conferences at the Main Media Centre, medal-round press conferences at the competition venues, IOC meetings, Chefs de Mission meetings either in consecutive or simultaneous modes depending on the demands and availability. Professional interpretation covers Chinese, French, Italian, German, Russian, Japanese and Korean using English as the pivot language. Volunteer interpretation, on the other hand, will utilise Chinese as the pivot language. The languages provided through both volunteers and professional interpreters vary by locations and clients and will be determined daily by Beijing 2022 Language Services taking into account the needs of key Olympic stakeholders and other Beijing 2022 Functional Areas.

Doping Control

General Principles

Beijing 2022 is committed to implement the doping control programme with high standard and quality. Under the direction of International Testing Agency (ITA) authorized by IOC, Beijing 2022 will ensure the doping control programme compliant with the World Anti-Doping Code so as to protect clean sports, clean athletes and athletes' right.

The International Testing Agency will develop the Test Distribution Plan and sign protocol with each IF. Samples of doping control will be analyzed according to the 2022 Prohibited List of the World Anti-Doping Agency (WADA) in WADA accredited anti-doping laboratory.

During the Olympic Winter Games, Doping Control Stations will be operating at all competition venues, 3 Olympic Villages and Medals Plazas. Doping Control Stations in the Olympic Villages are close to the Polyclinics.

Beijing 2022's testings start from the opening of the Olympic Village on January 27, 2022 until the closing ceremony on February 20, 2022. Urine and/or blood samples will be collected. Testings include In-Competition and Out-Of-Competition. In-Competition means the period commencing at 11:59 p.m. on the day before a competition in which the athlete is scheduled to participate through the end of such Competition and the sample collection process related to such competition. Out-Of-Competition means anytime that is not In-Competition. Out-Of-Competition testings start on the opening day of the Olympic Village and take place in the Doping Control Station in the Olympic Villages. If an athlete resides outside the Olympic Village, Out-Of-Competition testings may be implemented in the athlete's residence. What's more, some Out-Of-Competition testings may happen in the training venues. In-Competition testings often take place in the Doping Control Stations in competition venues. Athletes receive testings after their competitions. During the Games-time, Doping Control Command Centers will be set up to manage the operation of Doping Control Stations in the Olympic Villages, competition venues and Medals Plazas in 3 competition zones, and report technical issues directly to the ITA.

NOCs are encouraged to conduct anti-doping education sessions with their athletes, athlete support personnel and medical personnel prior to the Games.

NOCs are also encouraged to work with their National Anti-Doping Organization (NADO) and Regional Anti-Doping Organization (RADO) to ensure athletes are tested regularly, out-of-competition prior to the commencement of the Games.

Games-time Operations

Transport after doping control

Beijing 2022 will provide transportation for Athletes and NOC representatives who have undergone doping control from the competition venues to Olympic Villages (including non-shuttle bus hours).

If an athlete resides outside the Olympic Village, NOCs will be the one who is responsible to provide transportation bringing the athlete back to the accommodation.

Victory Ceremony for Athletes who have not completed doping control

If the medalist needs to participate the Victory Ceremony at the Medals Plaza and cannot complete the doping control process at the venue in sufficient time before the Victory Ceremony, he or she will be accompanied by a chaperon or a Doping Control Officer to complete the doping control process in the Doping Control Station at the Medals Plaza.

Interpreters during doping control process

Beijing 2022 will recruit local Doping Control Officers capable of communicating in English and international Doping Control Officers with multiple language skills to meet the language demand for doping control.

Athletes can also bring their designated interpreters, only one interpreter per athlete could have access to the Doping Control Station. The interpreter is allowed to participate the whole Doping Control process except for witnessing the urine sample provision.

In addition, Beijing 2022 can also provide on-site translation services or telephone interpretation services through the game's multilingual call centre when necessary.

Doping control under COVID-19

Beijing 2022 will formulate relevant countermeasures for doping control according to the actual situation of COVID-19 and the policies of IOC, ITA, WADA and Beijing 2022, and implement testings according to *WADA's Guidance for Testing During COVID-19 Pandemic*.

Safety

Safety Concerns

If you encounter safety threats when you are working or participating in activities in Beijing 2022 venues or facilities, please keep the following tips in mind which will be helpful.

- Please take care of your personal identification documents and carry them with you all the time.
- Please show your OIAC at the pass check points and have your personal belongings checked in accordance with the requirements of security screening. You must make sure that no prohibited or restricted item be brought into the venues.
- Dial these numbers when you need help: 110 (police), 119 (fire department), 120 (medical service).
- In case of safety threats, please stop your activities immediately. Do not panic. Please approach any Beijing 2022 staff/security personnel inside the venues or facilities and request their assistance.

Emergency Services

Contingency plans and evacuation procedures have been formulated for each venue of the Beijing 2022 Games in advance, and in case of emergency, the venue team will implement the plans and procedures as planned. What you need to do is to:

- Keep calm and take care of yourself. Choose a safe path to leave the dangerous area.
- Do exactly as you are told by the security personnel or professionals dealing with the emergency.
- Do not gather at the scene of emergency. Do not enter the dangerous area.
- Do not attempt emergency rescue if you have not received professional training.
- In case of any emergency, please approach any Beijing 2022 staff/security personnel inside the venues or facilities to request emergency assistance. You can also directly dial 110 (police), 119 (fire department) and 120 (medical service) to request help.

Security

A unified security coordination and command authority will be established at the national level for the Beijing 2022 Games to ensure the safety and harmony of the Beijing 2022 Games as supported by carefully designed security plans, sufficient human resources, sophisticated equipment and facilities, and efficient working mechanisms.

Access Control to Competition and Non-Competition Venues

Ticket and pass check points, pedestrian and vehicle security screening points will be set at the entry of the venue perimeter. To access the locked-down venues, all pedestrians must present valid tickets and passes and vehicles must present valid passes. The pedestrians and vehicles must go through ticket and/or pass check and security screening before they can enter the perimeter.

Venue Security Perimeters

24-hour security will be provided for competition venues, non-competition venues (excluding airports), and training venues. Pedestrian and vehicle security screening points will be set at the entry of the venue perimeter. To access the locked-down venues, all pedestrians must present valid tickets and passes and vehicles must present valid passes. The pedestrians and vehicles must go through ticket and/or pass check and security screening before they can enter the perimeter. The perimeter of a competition venue is divided into the front yard and the back yard, with the pedestrian and vehicle flows respectively created for different client groups. Security personnel are in place within the perimeters to provide security services for various client groups.

Multiple venues located within the same perimeter form a cluster that will be provided with 24-hour security. For venue clusters such as the venue cluster of Beijing Olympic Park Center Zone, the Capital Stadium Cluster, the venue cluster in Yanqing Competition Zone, the Genting Snow Park Cluster and Guyangshu Cluster, pedestrian and vehicle security screening points will be set at the entry of the cluster perimeter. To access venues in the cluster, all pedestrians must present valid tickets and passes and vehicles must present valid passes. The pedestrians and vehicles must go through ticket and/or pass check and security screening before they can enter the cluster perimeter. Then at each venue within the cluster perimeter, only tickets and passes will be checked and security screening will not be conducted anymore.

Transport and Security

The delegations will be provided with the “clean-to-clean” transport service between the Village Transport and the competition/training venues, which means that the bus that reaches the venue or Village will directly enter the venue security perimeter or Village Transport via the fast check channel (e.g. Express Entry) to park and drop off passengers.

List of Restricted and Prohibited Items

Note: Lists of Prohibited and Restricted Items for the Olympic Village and Olympic Family Hotel are formulated separately.

Legend:

X - Prohibited: Items which are NOT permitted to be brought into venues

O - Permitted: Items which ARE permitted to be brought into venues

R - Restricted: Only indicated items ARE permitted to be brought into venues under certain circumstances

No	Items	AthletesA·NOC/NPC	Workforce
1	Firearms, ammunition and explosives	X	X
2	Crossbows, daggers, imitation guns and other controlled tools	X	X
3	Hazardous items that are flammable and explosive, such as fireworks, firecrackers, gasoline, alcohol, etc.	X	X
4	Highly toxic, corrosive, and other hazardous chemicals and radioactive substances	X	X
5	Harmful biologics, infectious disease pathogens and other hazardous substances	X	X
6	Narcotics including heroin, cocaine, marijuana, methamphetamine, etc.	X	X
7	Items prohibited by Chinese laws and regulations	X	X
8	Self-brought alcoholic beverages	X	X
9	Fragile items and different kinds of containers, including but not limited to glass bottles/glasses, thermos and ice boxes	R Containers for personal use	R Containers for personal use
10	Self-brought beverages (either in flexible or rigid packages) and food	R Appropriate amount	R Appropriate amount for personal consumption

No	Items	AthletesA·NOC/NPC	Workforce
11	Banners, slogans and other propaganda items that carry contents related to political, racial, religious or commercial propaganda and in violation of the Olympic Charter, the IPC Handbook and/or Chinese laws and regulations	x	x
12	Means of transport, including but not limited to electric bicycles, motor scooters, bicycles, scooters, self-balancing scooters, skateboards, etc.	R • Baby carriages and wheelchairs • Training bicycles carried by the athletes are allowed to be brought into venues after security screening, but must be strictly managed by the carrier's team.	R Baby carriages and wheelchairs
13	Animals	R Guide dogs	R Guide dogs
14	Musical instruments, including but not limited to common musical instruments, whistles, horns, drums, etc.	R Whistles used for competition or training are allowed to be brought into venues after security screening, but must be strictly managed by the carrier's team.	R For musical instruments and props used by sports show performers, relevant information shall be submitted in advance to the venue security team for record and these items are allowed to be brought into venues after security screening, but must be strictly managed by the carrier's team.
15	Clubs, long sticks, sharp objects and other items that are easy to cause injuries, including but not limited to long-handle umbrellas, pointed umbrellas, etc.	R • Crutches used by people with a mobility impairment • Sports equipment (including but not limited to crampons, snow shovels, electric drills, skis, ski poles, hockey sticks and other necessary tools for venue operation and competition organization) carried by the athletes are allowed to be brought into venues after security screening, but must be strictly managed by the carrier's team.	R • Crutches used by people with a mobility impairment • Sports equipment (including but not limited to crampons, snow shovels, electric drills, skis, ski poles, hockey sticks and other necessary tools for venue operation and competition organization) carried by the personnel of competition organization are allowed to be brought into venues after security screening, but must be strictly managed by the carrier's team.
16	Balls, rackets, frisbees and other similar items	R Balls for warm-up activities carried by the athletes are allowed to be brought into venues after security screening, but must be strictly managed by the carrier's team.	x

No	Items	AthletesA·NOC/NPC	Workforce
17	Bags and suitcases, handbags, etc., that are too large in volume to be brought into the seating area	R Not allowed to be brought into the seating area	R Not allowed to be brought into the seating area
18	Flags of non-participating countries or regions of the Beijing 2022 Games; the flags with an expanded area over 2m×1m; flagpoles over 1m in length	X	X
19	Unauthorized professional camera equipment and supports of cameras and video cameras	R Home-use, small hand-held camera equipment	R Home-use, small hand-held camera equipment
20	Unauthorized items that may distract the attention of athletes, technical officials and coaches, that interfere with the electronic signals and cluster signals of the Games and affect the operation of the Games, or that affect people's spectating experience, including but not limited to radios, laser devices and amplification devices	R Authorized radios, laser devices and amplification devices used for competition organization are allowed to be brought into venues after security screening, but must be strictly managed by the carrier's team.	R Authorized radios, laser devices and amplification devices used for competition organization are allowed to be brought into venues after security screening, but must be strictly managed by the carrier's team.
21	Radio stations/radio transmitting devices without the dedicated label of "Radio Equipment License" for the Beijing 2022 Games	R <ul style="list-style-type: none"> Public mobile communication terminals (mobile phones) Embedded WLAN cards in the computers <ul style="list-style-type: none"> Laptops, tablet PCs Remote control keys of vehicles with a power lower than 2mW and the remote control devices of cameras Devices used by individuals that meet the technical requirements for micropower short-range radio transmitting devices including the biomedical telemetry and medical implants equipment and related supporting equipment Wearable smart devices such as smart watches, smart bracelets/bands, and bluetooth earphones/headsets 	R <ul style="list-style-type: none"> Public mobile communication terminals (mobile phones) Embedded WLAN cards in the computers <ul style="list-style-type: none"> Laptops, tablet PCs Remote control keys of vehicles with a power lower than 2mW and the remote control devices of cameras Devices used by individuals that meet the technical requirements for micropower short-range radio transmitting devices including the biomedical telemetry and medical implants equipment and related supporting equipment Wearable smart devices such as smart watches, smart bracelets/bands, and bluetooth earphones/headsets

No	Items	AthletesA·NOC/NPC	Workforce
22	Small civil aircraft such as drones and the remote control devices thereof, various types of model aircraft that can lift off and the remote control devices thereof, and airborne objects such as kites and Kongming lanterns	X	X
23	Items that may affect security and violate the Olympic Charter, the IPC Handbook, Chinese laws and regulations or the guideline for spectators on the tickets, such as cigarette lighters, matches, and other ignition tools, syringes, etc.	X	X
24	Maintenance tools, including but not limited to paper knives, screwdrivers and tool sets, etc.	R The necessary maintenance tools carried by the athletes and team officials are allowed to be brought into venues after security screening, but these items must be strictly managed by the carrier's team.	R The necessary maintenance tools and supplies carried by the venue team technical support personnel, the team maintenance support personnel of delegations and medical personnel are allowed to be brought into venues after security screening, but these items must be strictly managed by the carrier's team.
25	Cosmetics such as mousse and hair gel	R A small amount of necessary cosmetics such as mousse and hair gel carried by the athletes shall be tested by the carriers themselves under the supervision of the security check personnel and then will be allowed to be brought into venues after being confirmed, but these items must be strictly managed by the carrier's team.	R A small amount of necessary cosmetics such as mousse and hair gel carried by the hair and makeup artists of the Victory Ceremony Team during the pre-Games rehearsals and the Games-time and by the sports show performers shall be tested by the carriers themselves under the supervision of the security check personnel and then will be allowed to be brought into venues after being confirmed, but these items must be strictly managed by the carrier's team.
26	Sanitizing gels and alcohol pads for personal use	R Small amount, sanitizing gels up to 100ml	R Small amount, sanitizing gels up to 100ml

*Please cooperate if the SEC FA of Beijing 2022 requests additional security check.

Medical Services

General Aspects

Under the supervision of the Medical Commission of the International Olympic Committee (IOC MC), and in accordance with the stipulation of the *Olympic Charter*, Beijing 2022 has developed a comprehensive and integrated healthcare programme for all constituents of the Olympic Games.

Medical services will be provided in the following:

- Athlete Medical Stations at all competition and training venues, arranged in accordance with the IOC requirements and each International Federation's (IF) requirements.
- Polyclinics in the Beijing Olympic Village, the Yanqing Olympic Village and the Zhangjiakou Olympic Village.
- Designated hospitals for athletes and Olympic Family Members.
- Medical facilities accessible for spectators, Olympic Family Members, ticketed spectators, media and the workforce at all competition venues and non-competition venues.

Medical Services at the Venues

Beijing 2022 will provide medical services at all competition, training and official non-competition venues in accordance with the relevant IFs.

Venue medical services consist of Athlete Medical Stations, Field of Play (FOP) Medical Stations, Spectator medical stations. Each venue will be covered by Emergency Medical Services. In the Yanqing National Sliding Centre (YSC), there are 2 FOP Medical Stations, 2 Athlete Medical Station, 2 Spectator Medical Stations and 5 ambulances.

Athletes injured on the FOP will be evaluated on-site by professional medical workers depending on the venue and according to the relevant IFs requirements. If necessary, the athlete will be evacuated from the FOP and transported to the Athlete Medical Station, designated hospitals or other facilities, as appropriate. NOC medical personnel are advised to attend a meeting with the relevant venue medical officer/venue medical supervisor during the first few days of the official training to establish the procedures, roles and responsibilities of the personnel.

Polyclinics

Polyclinics will be located in the Residential Zone of each Village, and will offer medical services to accredited Athletes and Team Officials from January 27 to February 23, 2022. Services will be limited during the Villages' pre-opening period from January 23 to 26, and from February 23 to 25, 2022.

The Olympic Village Polyclinics will offer the following services 24 hours a day: emergency services, laboratory and pharmacy.

During the time from 07:00 to 23:00, Polyclinic will work as a medical facility and provide Internal medicine (cardiology, neurology, pulmonology, gastroenterology, endocrinology, nephrology), Surgery (orthopedics, neurosurgery, general surgery), gynaecology, rehabilitation, physiotherapy and traditional Chinese Medicine upon request.

Olympic Hospitals

If a patient requires in-patient treatment or any services above and beyond that which is provided in the Athlete Medical Stations or Polyclinics, he/she will be transferred by ambulance to the nearest designated hospital.

A total of 41 designated hospitals have been identified in Beijing 2022 to provide diagnosis and treatment services for all kinds of Olympic stakeholders.

Emergency Medical Services and Transport

During the Games, Beijing 2022 will coordinate all emergency transport services. The venue Medical Officer will be responsible for choosing the type of transport needed, depending on the type of injury or illness, weather and road conditions and the proximity to the hospitals.

All ambulances are staffed by two paramedics and equipped with emergency rescue equipments. Spare vehicles will be provided at each Medical Station to ensure that vehicles dispatched from the site could be replaced in a timely manner. The integrated dispatch center will coordinate the positioning and rotation of other ambulances if necessary.

Ambulances dedicated to Olympic venues will not be used for medical services outside such venues, except when local healthcare resources are not sufficient enough to handle mass casualties in the event of an accident or a natural disaster.

Interpretation Services

All individuals needing medical assistance have access to interpretation services at all Olympic venues.

Public Health

Public health services including, but not limited to, disease surveillance, communicable disease control, emergency health management and hygiene management will be in place throughout the regions where the Games are being held.

Consistent public health surveillance will include the monitoring of infectious and communicable diseases, regular sanitary inspections and testing for water and air quality control. A healthy lifestyle promotion and no-smoking policy programme will be in place.

The Olympic Winter Games Beijing 2022 will be a smoking-free Games. Smoking and tobacco consumption in any form, including e-cigarettes, will be prohibited within all venues of Beijing 2022.

Ceremonies

Opening and Closing Ceremonies

The Opening Ceremony will be held on February 4, 2022 and the Closing Ceremony on February 20, 2022. Both ceremonies will take place at the National Stadium in the Beijing Olympic Green. The National Stadium has a roof, but it's not completely covered. The average daily temperature and daily air velocity in Beijing Olympic Green during the Opening and Closing Ceremonies in February are as follow:

	Opening Ceremony	Closing Ceremony
Average Daily Temperature	-0.3°C	2.8°C
Average Daily Air Velocity	1.8m/s	1.4m/s

Victory Ceremonies

Please refer to the Victory Ceremonies Schedule and the Competition Schedule at the end of this manual for current information on the dates, times and locations of the Beijing 2022 Venue and Victory Ceremonies.

The venue broadcasting of Victory Ceremony will be in English, French and Chinese.

Victory Ceremonies

Victory Ceremonies will take place in the competition venue, immediately following the completion of the medal event. Medalists will receive a medal and a gift. The flags of the medalists will be raised, and the gold medal team's national anthem will be played.

Medal Boxes and Diplomas

The Medal Box of the Medalists and the Diplomas of the top eight winning athletes will be sent to the NOC Service Centre of the Olympic Villages in 24 hours after the Victory Ceremony every day. NOCs can collect them in the NOC Service Centre.

Mixed Zone and Press Conferences

General Principles for Interview Facilities

The OCOG provides designated areas at all competition venues and the Olympic Village in which media organisations may interview Athletes and Officials.

At each competition venue these interview facilities include a Mixed Zone in which athletes may be interviewed as soon as they leave the FOP. A press conference area is also available at each competition venue and the Olympic Village.

The location and smooth running of these facilities is an important element in the success of the Games coverage.

IFs and NOCs provide all the necessary assistance to the IOC, the OCOG and OBS in the mutual interests of all the partners concerned.

The final location, layout, policies and procedures for the management and operation of all Mixed Zones are agreed by OBS and Press Operations in cooperation with Sport and the Venue Media Team and approved by the IOC.

Mixed Zone Operations

Mixed Zone General Principles

- An effective Mixed Zone is vital in providing Games-time operations for athletes and the media.
- In the Mixed Zone, the media are expected to be courteous to athletes experiencing extremes of emotion or fatigue following their competitions, while the athletes are expected to respect that the media have an important role to play in publicising their achievements and their sport.
- All athletes must pass through the Mixed Zone when leaving the Field of Play. They are encouraged to participate in interviews, however they are not obliged to answer questions or participate in interviews if they do not wish to do so. Athletes must keep two metres from the Media at all times in the mixed zone.
- Mixed Zone will be operational during all training sessions in the competition venues. The practice venues will operate under the same rules as during the competitions, that is, athletes must leave the Field of Play through the Mixed Zone but are not obliged to talk with the media.
- The IOC requests that the Beijing 2022 Organizing Committee, IFs and NOCs provide all the necessary assistance to ensure the smooth operation of the Mixed Zone.

Mixed Zone Management

- Beijing 2022 Sport FA is responsible for escorting athletes from the Field of Play to the entrance of the broadcast Mixed Zone, but not through the Mixed Zone.
- OBS and Press Operations are responsible for escorting athletes through their respective sections of the Mixed Zone.
- OBS is responsible for the Rights Holding Broadcasters' section of the Mixed Zone. Beijing 2022 Press Operations is responsible for the Press section of the Mixed Zone.
- Only those with an operational role in the Mixed Zone i.e., competing athletes, media, OBS, Mixed Zone supervisors, doping control, OIS flash quote reporters, IOC media operations, registered NOC press attachés and others are permitted into their respective areas of the Mixed Zone.
- Coaches of non-team sports, managers and/or individual athletes' agents, security, and volunteers are not permitted in any area of the Mixed Zone.

Press Conferences Operations

Press Conferences

After each final event the medalists attend a venue press conference. Coaches and/or other athletes may also attend press conferences as circumstances dictate.

- Press Operations staff are responsible for conducting all press conferences at the competition venues. The press conference should occur as soon as possible after the end of the competition to help the media to meet their deadlines. This should not, however, interfere with normal Mixed Zone operations and timing should be adjusted accordingly to ensure this.
- Additional sports press conferences may be held at other times during the competitions at the discretion of the venue press manager and the NOC and/or IF media officer, who will jointly decide which athletes and coaches should attend.
- Professional interpretation services (simultaneous or consecutive) are provided for all press conferences.

Principles and COVID-19 Countermeasures

The Beijing 2022 Playbook is the basis of the game plan to ensure that all Olympic Winter Games participants and the people of China stay safe and healthy for the Games. It has been developed jointly by the Beijing 2022 and the IOC in close collaboration with the Chinese Government and relevant authorities.

Please refer to the Version 2 of *The Beijing 2022 Playbook* published on the official website of Beijing 2022 to acknowledge detailed policy on the Principles and COVID-19 Countermeasures for the Athletes and Team Officials:

<https://www.beijing2022.cn/sv1/wog.html?cmsid=20211213005851>

The Competition Continuity Contingency Plan will be updated to NOCs when confirmed by the IOC.

Appendix



Beijing 2022 Olympic Winter Games Training Schedule

Beijing 2022 Olympic Winter Games Training Schedule

Luge (LUG)
Men's Singles; Women's Singles; Doubles; Team Relay

National Sliding Centre

		5:30	6:00	6:30	7:00	7:30	8:00	8:30	9:00	9:30	10:00	10:30	11:00	11:30	12:00	12:30	13:00	13:30	14:00	14:30	15:00	15:30	16:00	16:30	17:00	17:30	18:00	18:30	19:00	19:30	20:00	20:30	21:00	21:30	22:00	22:30	23:00	23:30				
Day-11	Mon. Jan 24																																									
Day-10	Tue. Jan 25																																									
Day-9	wed. Jan 26																																									
Day-8	Thu. Jan 27																																									
Day-7	Fri. Jan 28																																									
Day-6	Sat. Jan 29																																									
Day-5	Sun. Jan 30																																									
Day-4	Mon. Jan 31																																									
Day-3	Tue. Feb 1									Men's LUGE Systematic Run (2 runs) 9:30-12:30									Women's LUGE Systematic Run (2 runs) 13:30-16:30																							
Day-2	Wed. Feb 2																													Men's LUGE Run 1 & 2 OTRG#1 (2 Runs) 19:30-22:30												
Day-1	Thu. Feb 3																				Men's LUGE Run 3 & 4 OTRG#2 (2 Runs) 15:00-18:00							Women's LUGE Run 1 & 2 OTRG#1 (2 Runs) 18:30-21:30														
Day 0	Fri. Feb 4								Men's LUGE Run 5 & 6 OTRG#3 (2 runs) 09:00-12:00																																	
Day 1	Sat. Feb 5								Doubles LUGE Systematic Run (2 Runs) 9:00-10:30											Women's LUGE Run 3 & 4 OTRG#2 (2 Runs) 14:30-17:30							Men's Single COMP Heat 1&2 (2 Runs) 19:10-22:00															
Day 2	Sun. Feb 6							Women's LUGE Run 5 & 6 OTRG#3 (2 Runs) 08:00-11:00												Doubles LUGE Run 1 & 2 OTRG#1 (2 runs) 15:00-17:00											Men's Single COMP Heat 3&4 (2 Runs) 19:30-21:59											
Day 3	Mon. Feb 7									Doubles LUGE Run 3 & 4 OTRG#2 (2 runs) 16:00-18:00																																
Day 4	Tue. Feb 8									Doubles LUGE Run 5 & 6 OTRG#3 (2 runs) 09:30-11:30																																
Day 5	Wed. Feb 9									Men's Single Official Training - Team Relay 09:30-10:00																																
Day 6	Thu. Feb 10																																									
Day 7	Fri. Feb 11																																									
Day 8	Sat. Feb 12																																									
Day 9	Sun. Feb 13																																									
Day 10	Mon. Feb 14																																									
Day 11	Tue. Feb 15																																									
Day 12	Wed. Feb 16																																									

Competition and training times are subject to change.(GMT+8) 10:00, Friday - (CET) 03:00, Friday - (EST, USA) 21:00, Thursday.
Training Schedule is subject to change according to weather conditions and information will be made through connection coaches man/woman respectively.

Competition
 Official Training
 Systematic Training
 Additional Training
 Medal Event

Beijing 2022 Olympic Winter Games Victory Ceremonies Schedule

Beijing 2022 Olympic Winter Games - Victory Ceremonies Schedule - Nov.25.2021 KEY: ■ = Next Day ▲ = Same Day ■■ = 2 Days Later																			
Venue	Sport / Discipline	Day 1	Day 2	Day 3	Day 4	Day 5	Day 6	Day 7	Day 8	Day 9	Day 10	Day 11	Day 12	Day 13	Day 14	Day 15	Day 16	Victory CER	
		Saturday Feb. 05	Sunday Feb. 06	Monday Feb. 07	Tuesday Feb. 08	Wednesday Feb. 09	Thursday Feb. 10	Friday Feb. 11	Saturday Feb. 12	Sunday Feb. 13	Monday Feb. 14	Tuesday Feb. 15	Wednesday Feb. 16	Thursday Feb. 17	Friday Feb. 18	Saturday Feb. 19	Sunday Feb. 20		
Beijing Media Plaza	Season Code		MDL01	MDL03	MDL05	MDL07	MDL09	MDL11	MDL13	MDL15	MDL17	MDL19	MDL21	MDL23	MDL25	MDL27			
	Event		F1) Speed Skating W 3000 m 19:40:00-19:49:00(9mins)	F1) Speed Skating M 5000 m 19:40:00-19:49:00(9mins)	F1) Short Track M 1500 m 19:40:00-19:54:00(14mins)	F1) Speed Skating M 5000 m 19:40:00-19:49:00(9mins)	F1) Short Track M 1500 m 19:40:00-19:54:00(14mins)	F1) Short Track M 1500 m 19:40:00-19:54:00(14mins)	F1) Speed Skating M 5000 m 19:40:00-19:49:00(9mins)	F1) Short Track M 1500 m 19:40:00-19:54:00(14mins)	F1) Speed Skating M 5000 m 19:40:00-19:49:00(9mins)	F1) Short Track M 1500 m 19:40:00-19:54:00(14mins)	F1) Speed Skating M 5000 m 19:40:00-19:49:00(9mins)	F1) Short Track M 1500 m 19:40:00-19:54:00(14mins)	F1) Figure Skating W Single Skating 19:45:00-19:54:00(9mins)	F1) Curling Men 19:30:00-19:44:00(14mins)	F1) Figure Skating W Single Skating 19:45:00-19:54:00(9mins)	F1) Curling Men 19:30:00-19:44:00(14mins)	
	Total Victory Ceremonies		2	2	4	2	3	1	3	0	4	4	0	3	2	3	0	33	
Zhangjiakou Shuangjiu Plaza	Season Code		MDL02	MDL04	MDL06	MDL08	MDL10	MDL12	MDL14	MDL16	MDL18	MDL20	MDL22	MDL24	MDL26	MDL28			
	Event		F1) Ski Jumping W Individual NH 19:30:00-19:39:00(9mins)	F1) Snowboard M Snowboard Slopestyle 19:30:00-19:39:00(9mins)	F1) Ski Jumping M Individual NH 19:30:00-19:39:00(9mins)	F1) Cross-Country Skiing W Individual Sprint Free 19:30:00-19:39:00(9mins)	F1) Nordic Combined M Individual NH/10km 19:30:00-19:39:00(9mins)	F1) Cross-Country Skiing W Individual Sprint Free 19:30:00-19:39:00(9mins)	F1) Nordic Combined M Individual NH/10km 19:30:00-19:39:00(9mins)	F1) Ski Jumping M Individual LH 19:30:00-19:39:00(9mins)	F1) Cross-Country Skiing W Individual Sprint Free 19:30:00-19:39:00(9mins)	F1) Nordic Combined M Individual NH/10km 19:30:00-19:39:00(9mins)	F1) Ski Jumping M Individual LH 19:30:00-19:39:00(9mins)	F1) Nordic Combined M Individual NH/10km 19:30:00-19:39:00(9mins)	F1) Cross-Country Skiing W Individual Sprint Free 19:30:00-19:39:00(9mins)	F1) Nordic Combined M Individual NH/10km 19:30:00-19:39:00(9mins)	F1) Freestyle Skiing M Individual NH 19:45:00-19:54:00(9mins)	F1) Freestyle Skiing M Individual NH 19:45:00-19:54:00(9mins)	
	Total Victory Ceremonies		5	3	5	4	4	3	2	4	3	2	5	3	3	0	49		
National Olympic Stadium	Event																	F1) Cross-Country Skiing M 50 km Mass Start Free	
Total Victory Ceremonies																		F2) Cross-Country Skiing M 30 km Mass Start Free	
Total Victory Ceremonies		7	5	9	6	7	4	6	2	8	7	5	6	2	2	84			

KEY: ■ = Next Day ▲ = Same Day ■■ = Two Days Later ■ Venue Victory Ceremonies

ISSUES

Closing Ceremonies: Transport timing to be worked out for Cross Country Women's 30K Mass Start

Late Athlete Replacement Policy for the Olympic Winter Games Beijing 2022



INTERNATIONAL
OLYMPIC
COMMITTEE

IOC Joint Policy

1. Key information					
Title	Late Athlete Replacement (LAR)	Version Date	4.1 24/08/2021	Classification	Joint Policy
IOC owner	Irina GLADIKH, Associate Director, Winter and Recognised Sports and IF Relations				
IOC sign-off	Kit McCONNELL, Sports Director				
Effective dates	From 24 January 2022 23:59 Beijing time (GMT+8) and up to relevant sport/discipline/event Technical Meeting/first Team Captains' Meeting for the related discipline.				
2. Policy impact					
Impacted stakeholder groups	Athletes and National Olympic Committee delegations (NOC), International Olympic Committee (IOC), International Federations (IF)				
Impacted OCOG Functional Areas (FA)	Accreditation, NOC Services, Sport (Sport Entries), Villages Management				
Impacted IOC departments	Medical, NOC Relations, Sports				
3. Policy overview					
Description	<p>This policy applies to athletes of NOCs attending the Olympic Winter Games Beijing 2022.</p> <p>The deadline for the Final Entries list of participating athletes in the Olympic Winter Games Beijing 2022 (sport entries deadline) is 24 January 2022 23:59 Beijing time (GMT+8).</p> <p>After the sport entries deadline, where there are medical conditions preventing participation of an athlete, proven Anti-Doping Rule Violation (ADRV), a positive COVID-19 test, isolation or quarantine due to a COVID-19 infection or other exceptional reasons, the IOC, after consultation with the relevant IF and IOC medical experts (when deemed appropriate by the IOC), may authorise a permanent replacement of an athlete by another athlete only in the same sport and discipline and event. Late Athlete Replacement may only occur up to the relevant sport/discipline/event Technical Meeting/first Team Captains' Meeting for the related discipline, unless otherwise stated in Discipline Specific Implementation (DSI) (see Annex).</p> <p>This policy is only applicable for those sports/disciplines where the quota place has been allocated to the NOC and not to an athlete by name.</p> <p>An LAR is possible only provided that:</p> <ul style="list-style-type: none"> (i) The replacement athlete meets the eligibility conditions and qualification criteria to take part in the Olympic Winter Games Beijing 2022, as stipulated in the "Qualification System for XXIV Olympic Winter Games, Beijing2022", per sport/disciplines published in 2019, and regularly updated by the IOC on NOCnet, the IOC Extranet for NOCs, in the Games Preparation section; (ii) The replacement athlete has adhered to all guidelines regarding COVID 19 countermeasures as per Beijing 2022 policy. 				

IOC Policy: Late Athlete Replacement (LAR)

Page 1/3



INTERNATIONAL
OLYMPIC
COMMITTEE

IOC Joint Policy

	<p>(iii) The NOC of the replacement athlete had applied successfully for accreditation for the athlete prior to the application deadline, and thus, the replacement athlete has been registered by Beijing 2022 in the "NOC's Athlete Accreditation Long List"; and</p> <p>(iv) No doping control issues are pending concerning the replacement athlete.</p> <p>In addition, the steps outlined below must be followed and the required forms submitted within the timeframe stated in this policy:</p> <p>(v) The "Late Athlete Replacement Form" and "Sport Entry Form" must be completed and a valid medical certificate and supporting document for the replaced athlete must be submitted by the relevant NOC, for the athlete being replaced and the replacement athlete using the e-LAR tool in the Sport Entries System (SEQ);</p> <p>(vi) The "Conditions of Participation" including the "Parental/Legal Guardian Acknowledgement of Consent for Minors" form (if applicable) must be completed and submitted by the relevant NOC for the replacement athlete. The NOC must submit a scanned copy of the "Conditions of Participation" electronically and bring the original, signed and stamped to the Accreditation Centre in the Olympic Village Team Processing Centre.</p> <p>The IOC and the relevant IF may make an LAR, subject to their joint consent and at their discretion.</p> <p>The latest a LAR may occur and must be completed is no later than the first Technical Meeting/Team Captains' Meeting for the respective sport/discipline. This is subject to the deadlines outlined in the DSI (see Annex).</p> <p>Alternate athletes (Ap) As per the "Accreditation at the Olympic Games – Detailed specifications" NOCs can activate an alternate athlete (Ap) in the following discipline: Bobsleigh.</p> <p>The Ap athlete needs to be identified at the time of the Delegation Registration Meeting (DRM) but an NOC can replace the athlete prior to the deadline of Bobsleigh, set out in the DSI.</p> <p>Before the sport-specific deadlines set in the LAR procedures, the NOCs also have the possibility to activate their alternate athletes or to use a replacement from the long list and be in a position to appoint another Ap athlete.</p> <p>Once competition has started, the activation of the Ap athlete has to follow the e-LAR process as above and according to the process stipulated in the LAR procedures.</p> <p>All documentation and queries regarding the LAR should be addressed to Beijing 2022 Sports Entries through the e-LAR tool or in person at the Sport Entries Office in the Beijing Olympic Village Team Processing Centre.</p> <p>Applications with missing information will not be processed.</p> <p>This policy is subject to further change by the IOC for exceptional circumstances.</p>
Exclusions	Not applicable
Related policies	Late Reallocation

IOC Policy: Late Athlete Replacement (LAR)

Page 2/3



INTERNATIONAL
OLYMPIC
COMMITTEE

IOC Joint Policy

4. Additional information	
Acronym	Definition
ADRV	Anti-Doping Rule Violation
DRM	Delegation Registration Meeting
DSI	Discipline Specific Implementation
FA	Functional Area
IF	International Federation
IOC	International Olympic Committee
LAR	Late Athlete Replacement
NOC	National Olympic Committee
OCOG	Organising Committee for the Olympic Games
SEQ	Sport Entries and Qualification System
TPC	Team Processing Centre

Annex: Discipline Specific Implementation (DSI)

IOC Policy: Late Athlete Replacement (LAR)

Page 3/3

Olympic Winter Games Beijing 2022

Late Athlete Replacement (LAR)

Appendix: Discipline Specific Implementation (DSI)

13 Dec. 2021



Provisions

- Please note that LARs must be concluded by the respective deadline. Please allow sufficient time as it may take up to 24 hours to process a LAR.
- The date and time are subject to change. It will be updated if there is any change.
- This Appendix along with the Late Athlete Replacement policy are published on the Beijing 2022 extranet on the IOC NOCnet and it will be updated whenever necessary.

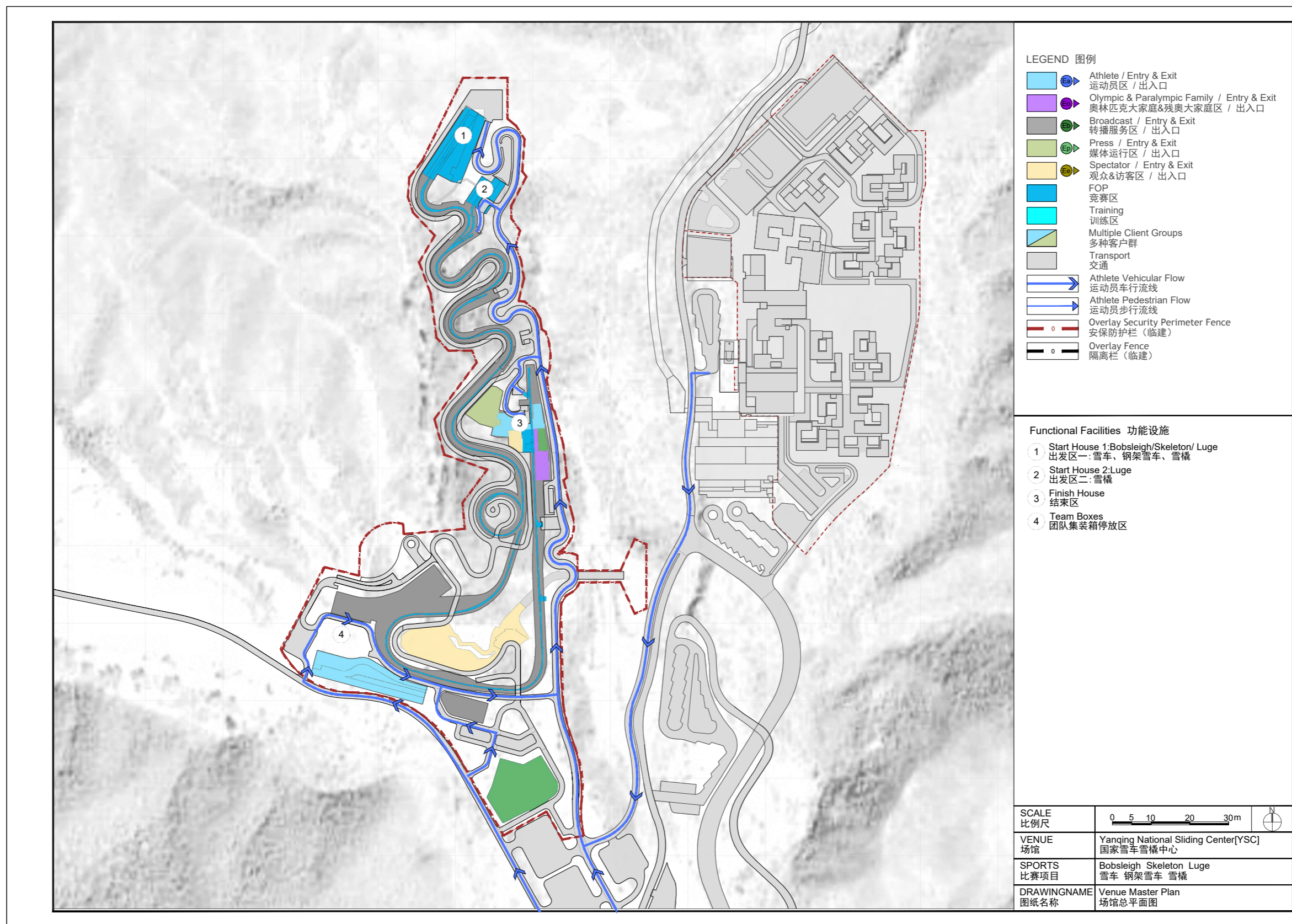
Discipline	Event	Date and Time of Start of Competition	Date and Time of Technical /Draw/Confirmation Meeting	LAR Process Deadline	Details regarding LAR Deadline		
Alpine Skiing	Men's Downhill	06 Feb. 2022, 11:15	05 Feb. 2022, 17:00	04 Feb. 2022, 16:00	The LAR process must be completed at least 1 hour before the Team Captains' meeting in which the draw for that event will be held. Exception, for downhill and Alpine Combined event, it's 1 hour before the last training TCM.		
	Women's Giant Slalom	07 Feb. 2022, 10:00	06 Feb. 2022, 17:00	06 Feb. 2022, 16:00			
	Men's Super-G	08 Feb. 2022, 11:00	07 Feb. 2022, 17:00	07 Feb. 2022, 16:00			
	Women's Slalom	09 Feb. 2022, 10:15	08 Feb. 2022, 17:00	08 Feb. 2022, 16:00			
	Men's Alpine Combined	10 Feb. 2022, 10:30	09 Feb. 2022, 18:30	08 Feb. 2022, 17:30			
	Women's Super-G	11 Feb. 2022, 11:00	10 Feb. 2022, 17:00	10 Feb. 2022, 16:00			
	Men's Giant Slalom	13 Feb. 2022, 10:15	12 Feb. 2022, 18:30	12 Feb. 2022, 17:30			
	Women's Downhill	15 Feb. 2022, 11:00	14 Feb. 2022, 17:00	13 Feb. 2022, 16:00			
	Men's Slalom	16 Feb. 2022, 10:15	15 Feb. 2022, 17:00	15 Feb. 2022, 16:00			
	Women's Alpine Combined	17 Feb. 2022, 10:30	16 Feb. 2022, 17:00	15 Feb. 2022, 16:00			
	Mixed Team Event	19 Feb. 2022, 11:00	18 Feb. 2022, 17:00	18 Feb. 2022, 16:00			
	Snowboard	Women's Slopestyle	05 Feb. 2022, 10:45	04 Feb. 2022, 14:00		04 Feb. 2022, 13:00	The LAR process must be completed at least 1 hour before the Team Captains' meeting during which the draw for the event concerned takes place. Exception, for Cross event, it's 1 hour before the last training TCM.
		Men's Slopestyle	06 Feb. 2022, 12:30	05 Feb. 2022, 16:00		05 Feb. 2022, 15:00	
Women's Big Air		14 Feb. 2022, 09:30	13 Feb. 2022, 16:00	04 Feb. 2022, 13:00			
Men's Snowboard Big Air		14 Feb. 2022, 13:30		05 Feb. 2022, 15:00			
Women's Parallel Giant Slalom		08 Feb. 2022, 10:40	07 Feb. 2022, 17:00	07 Feb. 2022, 16:00			
Men's Parallel Giant Slalom		08 Feb. 2022, 10:40					
Women's Halfpipe		09 Feb. 2022, 09:30					
Men's Halfpipe		09 Feb. 2022, 12:30	08 Feb. 2022, 15:30	08 Feb. 2022, 14:30			
Women's Cross		09 Feb. 2022, 11:00	08 Feb. 2022, 16:00	07 Feb. 2022, 15:00			
Men's Cross		10 Feb. 2022, 11:15	09 Feb. 2022, 18:00	08 Feb. 2022, 15:00			
Freestyle Skiing	Cross Mixed Team	12 Feb. 2022, 10:00	11 Feb. 2022, 16:00	11 Feb. 2022, 15:00	The LAR process must be completed at least 1 hour before the Team Captains' meeting during which the draw for the event concerned takes place. Exception, for Cross event, it's 1 hour before the last training TCM.		
	Women's Moguls	03 Feb. 2022, 18:00					
	Men's Moguls	03 Feb. 2022, 19:45	03 Feb. 2022, 14:00	03 Feb. 2022, 13:00			
	Women's Big Air	07 Feb. 2022, 09:30					
	Men's Big Air	07 Feb. 2022, 13:30	06 Feb. 2022, 16:00	06 Feb. 2022, 15:00			
	Women's Slopestyle	13 Feb. 2022, 10:00					
	Men's Slopestyle	14 Feb. 2022, 12:30					
	Aerials Mixed Team	10 Feb. 2022, 19:00					
	Women's Aerials	13 Feb. 2022, 19:00	10 Feb. 2022, 12:00	10 Feb. 2022, 11:00			
	Men's Aerials	15 Feb. 2022, 19:00					
	Women's Ski Cross	17 Feb. 2022, 19:30	16 Feb. 2022, 16:00	15 Feb. 2022, 15:00			
	Men's Ski Cross	18 Feb. 2022, 19:00	17 Feb. 2022, 18:00	16 Feb. 2022, 15:00			
	Women's Halfpipe	17 Feb. 2022, 09:30	16 Feb. 2022, 15:30	16 Feb. 2022, 14:30			
Ski Jumping	Men's Halfpipe	17 Feb. 2022, 12:30			The LAR process must be completed at least 1 hour before production of the start list for the qualification or the first round of the respective event.		
	Women's Normal Hill Individual	05 Feb. 2022, 18:45	03 Feb. 2022, 11:00	03 Feb. 2022, 10:00			
	Men's Normal Hill Individual	05 Feb. 2022, 14:20	03 Feb. 2022, 12:00	03 Feb. 2022, 11:00			
	Mixed Team	07 Feb. 2022, 19:45	06 Feb. 2022, 21:00	06 Feb. 2022, 20:00			
	Men's Large Hill Individual	11 Feb. 2022, 19:00	10 Feb. 2022, 20:45	10 Feb. 2022, 19:45			
	Men's Team	14 Feb. 2022, 19:00	13 Feb. 2022, 21:15	13 Feb. 2022, 20:15			
	Individual Gundersen NH /10km	09 Feb. 2022, 16:00	08 Feb. 2022, 20:30	08 Feb. 2022, 19:30			
Nordic Combined	Individual Gundersen LH /10km	15 Feb. 2022, 16:00	14 Feb. 2022, 20:00	14 Feb. 2022, 19:00	The LAR process must be completed at least 1 hour before production of the start list for the Ski Jumping competition round for the respective event.		
	Team Gundersen LH /4x5km	17 Feb. 2022, 16:00	16 Feb. 2022, 20:00	16 Feb. 2022, 19:00			
	Women's 7.5km + 7.5km Skiathlon	05 Feb. 2022, 15:45	04 Feb. 2022, 18:30	04 Feb. 2022, 17:30			
	Men's 15km + 15km Skiathlon	06 Feb. 2022, 15:00	05 Feb. 2022, 18:30	05 Feb. 2022, 17:30			
	Men's Sprint Free	08 Feb. 2022, 16:00					
	Women's Sprint Free	08 Feb. 2022, 16:00	07 Feb. 2022, 18:30	07 Feb. 2022, 17:30			
	Women's 10km Classic	10 Feb. 2022, 15:00	09 Feb. 2022, 18:30	09 Feb. 2022, 17:30			
	Men's 15km Classic	11 Feb. 2022, 15:00	10 Feb. 2022, 18:30	10 Feb. 2022, 17:30			
	Women's 4x5km Relay	12 Feb. 2022, 15:30	N/A	N/A			
	Men's 4x10km Relay	13 Feb. 2022, 15:00	N/A	N/A			
Cross-Country Skiing	Men's Team Sprint Classic	16 Feb. 2022, 17:00	N/A	N/A	The LAR process must be completed at least 1 hour before the Team Captains' meeting in which the draw for that event will be held.		
	Women's Team Sprint Classic	16 Feb. 2022, 17:00	N/A	N/A			
	Men's 50km Mass Start Free	19 Feb. 2022, 14:00	18 Feb. 2022, 18:30	18 Feb. 2022, 17:30			
	Women's 30km Mass Start Free	20 Feb. 2022, 15:00	19 Feb. 2022, 18:30	19 Feb. 2022, 17:30			
	2x6km W + 2x6km M Mixed Relay	05 Feb. 2022, 17:00	04 Feb. 2022, 18:00	04 Feb. 2022, 17:30			
	Women's 15km Individual	07 Feb. 2022, 17:00	06 Feb. 2022, 20:00	06 Feb. 2022, 19:30			
	Men's 20km Individual	08 Feb. 2022, 16:30	07 Feb. 2022, 20:00	07 Feb. 2022, 19:30			
	Women's 7.5km Sprint	11 Feb. 2022, 17:00	10 Feb. 2022, 19:30	10 Feb. 2022, 19:00			
	Men's 10km Sprint	12 Feb. 2022, 17:00	11 Feb. 2022, 19:30	11 Feb. 2022, 19:00			
	Women's 10km Pursuit	13 Feb. 2022, 17:00	N/A	N/A			
	Men's 12.5km Pursuit	13 Feb. 2022, 18:45	N/A	N/A			
Biathlon	Men's 4x7.5km Relay	15 Feb. 2022, 17:00	14 Feb. 2022, 19:45	14 Feb. 2022, 19:15	The LAR process must be completed before the Technical Meeting or draw of the respective event.		
	Women's 4x6km Relay	16 Feb. 2022, 15:45	15 Feb. 2022, 19:15	15 Feb. 2022, 18:45			
	Men's 15km Mass Start	18 Feb. 2022, 17:00	N/A	N/A			
	Women's 12.5km Mass Start	19 Feb. 2022, 17:00	N/A	N/A			
	Women's Monobob	13 Feb. 2022, 09:30	09 Feb. 2022, 09:00	09 Feb. 2022, 09:00			
	2-Man Bobsleigh	14 Feb. 2022, 20:05					
	2-Woman Bobsleigh	18 Feb. 2022, 20:00	12 Feb. 2022, 15:45	12 Feb. 2022, 15:45			
	4-Man Bobsleigh	19 Feb. 2022, 09:30					
	Skeleton	Men's Skeleton	10 Feb. 2022, 09:30	06 Feb. 2022, 14:30		06 Feb. 2022, 14:30	The LAR process must be completed before the Draw for training of the respective event.
		Women's Skeleton	11 Feb. 2022, 09:30				

Discipline	Event	Date and Time of Start of Competition	Date and Time of Technical /Draw/Confirmation Meeting	LAR Process Deadline	Details regarding LAR Deadline		
Luge	Men's Singles	05 Feb. 2022, 19:10	31 Jan. 2022, 15:00	31 Jan. 2022, 15:00	The LAR process must be completed before the draw for the first training.		
	Women's Singles	07 Feb. 2022, 19:50					
	Doubles	09 Feb. 2022, 20:20					
	Team Relay	10 Feb. 2022, 21:30					
Short Track Speed Skating	Women's 500m	05 Feb. 2022, 19:00	The first Team Leaders' meeting 03 Feb. 2022, 13:45	03 Feb. 2022, 13:45	The LAR process must be completed no later than the start of the first General Team Leaders' meeting.		
	Men's 1000m	05 Feb. 2022, 19:00					
	Men's 1500m	09 Feb. 2022, 19:00					
	Women's 1000m	09 Feb. 2022, 19:00					
	Men's 500m	11 Feb. 2022, 19:00					
	Women's 1500m	16 Feb. 2022, 19:30					
	Mixed Team Relay	05 Feb. 2022, 19:00				03 Feb. 2022, 13:45	03 Feb. 2022, 13:45
	Women's 3000m Relay	09 Feb. 2022, 19:00 Semi-F 13 Feb. 2022, 19:00 Final				08 Feb. 2022, 12:15 12 Feb. 2022, 11:00	08 Feb. 2022, 12:15 12 Feb. 2022, 11:00
	Men's 5000m Relay	11 Feb. 2022, 19:00 Semi-F 16 Feb. 2022, 19:30 Final				10 Feb. 2022, 15:00 15 Feb. 2022, 11:00	10 Feb. 2022, 15:00 15 Feb. 2022, 11:00
	Speed Skating	Men's 500m				12 Feb. 2022, 16:00	The first Team Leaders' meeting (Men) 05 Feb. 2022, 18:05
Men's 1000m		18 Feb. 2022, 16:30					
Men's 1500m		08 Feb. 2022, 18:30					
Men's 5000m		06 Feb. 2022, 18:30					
Men's 10000m		11 Feb. 2022, 16:00					
Men's Mass Start		19 Feb. 2022, 15:00					
Men's Team Pursuit		13 Feb. 2022, 21:00	12 Feb. 2022, 17:48	12 Feb. 2022, 17:48			
Women's 500m		13 Feb. 2022, 21:00	The first Team Leaders' meeting (Women) 04 Feb. 2022, 14:20	04 Feb. 2022, 14:20			
Women's 1000m		17 Feb. 2022, 16:30					
Women's 1500m		07 Feb. 2022, 16:30					
Women's 3000m		05 Feb. 2022, 16:30					
Women's 5000m		10 Feb. 2022, 20:00					
Women's Mass Start		19 Feb. 2022, 15:00					
Women's Team Pursuit	12 Feb. 2022, 16:00	11 Feb. 2022, 18:07			11 Feb. 2022, 18:07		
Figure Skating	Men's Single Skating	08 Feb. 2022, 09:15	06 Feb. 2022, 14:45	06 Feb. 2022, 13:45	For the individual events, the LAR process must be completed no later than one (1) hour before the first Draw meeting for each event. For the Team Event, the LAR process must be completed no later than one (1) hour before each Team Confirmation meeting. If an athlete/couple has competed in any segment, they cannot be replaced using the LAR process.		
	Ice Dance	12 Feb. 2022, 19:00	10 Feb. 2022, 15:30	10 Feb. 2022, 14:30			
	Women's Single Skating	15 Feb. 2022, 18:00	13 Feb. 2022, 10:30	13 Feb. 2022, 09:30			
	Pair Skating	18 Feb. 2022, 18:30	16 Feb. 2022, 12:45	16 Feb. 2022, 11:45			
	Team Event	03 Feb. 2022, 10:00 (Men/Ice Dance/Pairs - Short/Rhythm)	03 Feb. 2022, 09:00	03 Feb. 2022, 09:00			
		06 Feb. 2022 (Women - Short)	05 Feb. 2022, 10:00 (Women - Short)	05 Feb. 2022, 09:00			
		06 Feb. 2022 (Men - Free)	06 Feb. 2022, 11:00 (Men - Free)	06 Feb. 2022, 10:00			
07 Feb. 2022 (Pairs/Ice Dance/Women - Free)		06 Feb. 2022, 13:45 (Pairs/Ice Dance/Women - Free)	06 Feb. 2022, 12:45				
Curling	Mixed Doubles Curling	02 Feb. 2022, 20:05	02 Feb. 2022, 09:00	the end of the meeting	The LAR process must be completed before the end of the Team Meeting for the appropriate event.		
	Men's Curling	09 Feb. 2022, 20:05	08 Feb. 2022, 11:00				
Ice Hockey	Women's Tournament	03 Feb. 2022, 12:10	the First Directorate meeting 02 Feb. 2022, 10d	03 Feb. 2022, 10:10	Individual players cannot be replaced once their place on the team roster has been confirmed (either at the First Directorate meeting, or no later than two (2) hours before the first game of the competition).		
	Men's Tournament	09 Feb. 2022, 16:40	the First Directorate meeting 08 Feb. 2022, 10d	09 Feb. 2022, 14:40			

DSI Change Log

Date	Done By	Discipline	Event	Updates	Comments
2021.12.9	IF/IOC	ALL	ALL	ALL	V1.0 Published
2021.12.13	FIS	ALP	Women' Super-G Men's Giant Slalom Women' Alpine Combined	"Date and Time of Technical Meeting updated; LAR Process Deadline updated	V1.1

Yanqing National Sliding Centre Master Plan



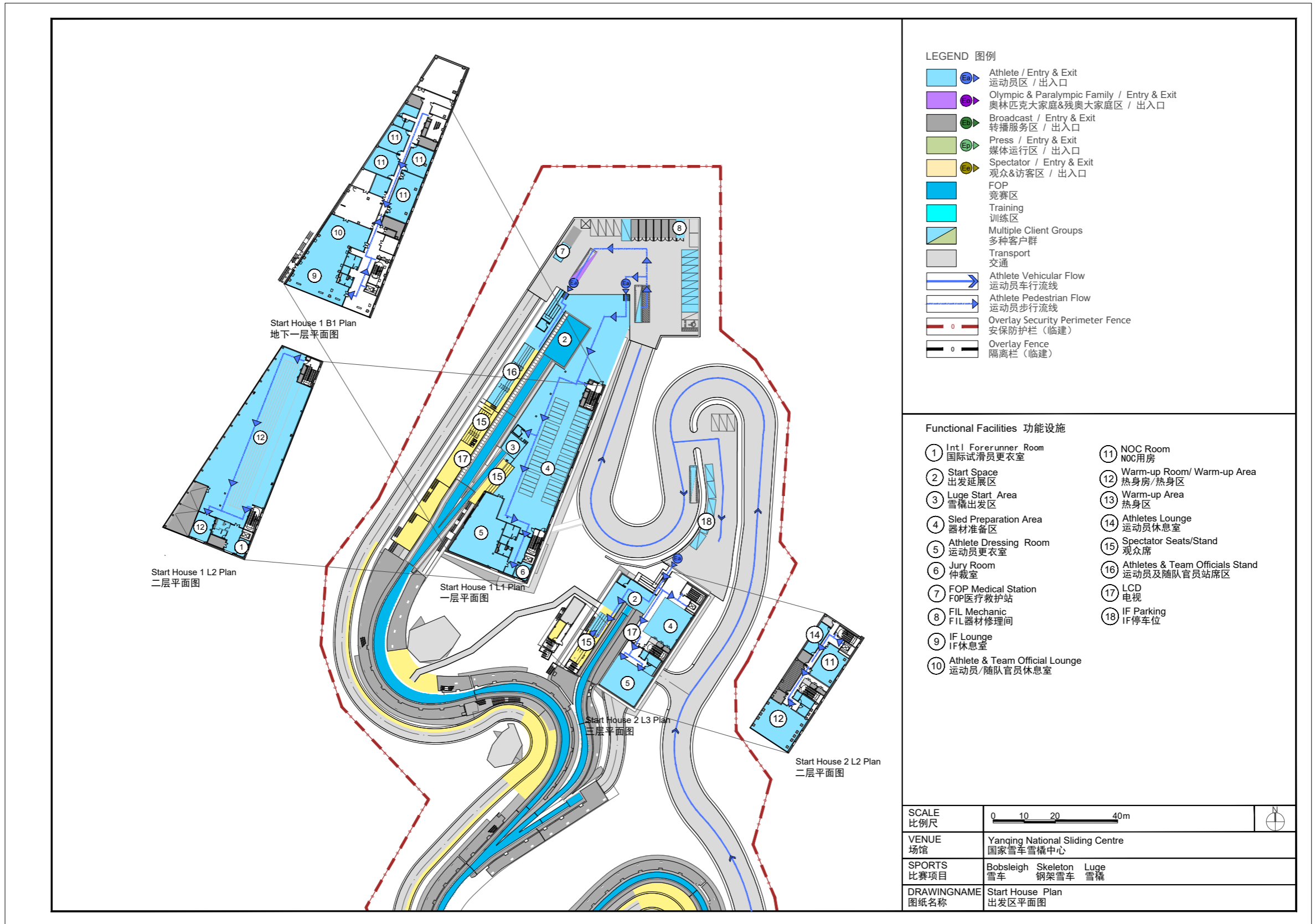
LEGEND 图例

- Athlete / Entry & Exit
运动员区 / 出入口
- Olympic & Paralympic Family / Entry & Exit
奥林匹克大家庭&残奥大家庭区 / 出入口
- Broadcast / Entry & Exit
转播服务区 / 出入口
- Press / Entry & Exit
媒体运行区 / 出入口
- Spectator / Entry & Exit
观众&访客区 / 出入口
- FOP
竞赛区
- Training
训练区
- Multiple Client Groups
多种客户群
- Transport
交通
- Athlete Vehicular Flow
运动员车行流线
- Athlete Pedestrian Flow
运动员步行流线
- Overlay Security Perimeter Fence
安保防护栏 (临建)
- Overlay Fence
隔离栏 (临建)

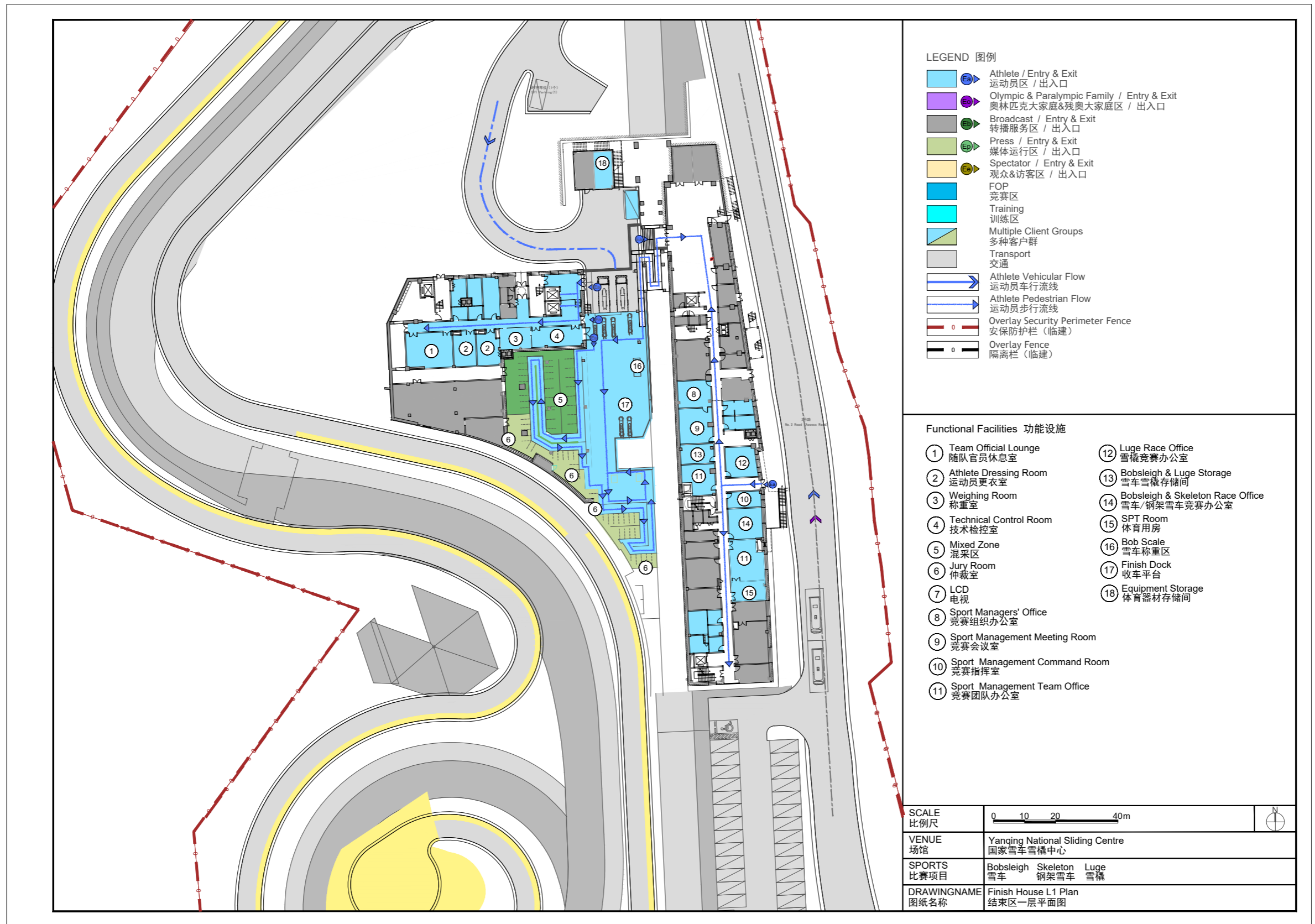
Functional Facilities 功能设施

- ① Start House 1: Bobsleigh/Skeleton/ Luge
出发区一: 雪车、钢架雪车、雪橇
- ② Start House 2: Luge
出发区二: 雪橇
- ③ Finish House
结束区
- ④ Team Boxes
团队集装箱停放区

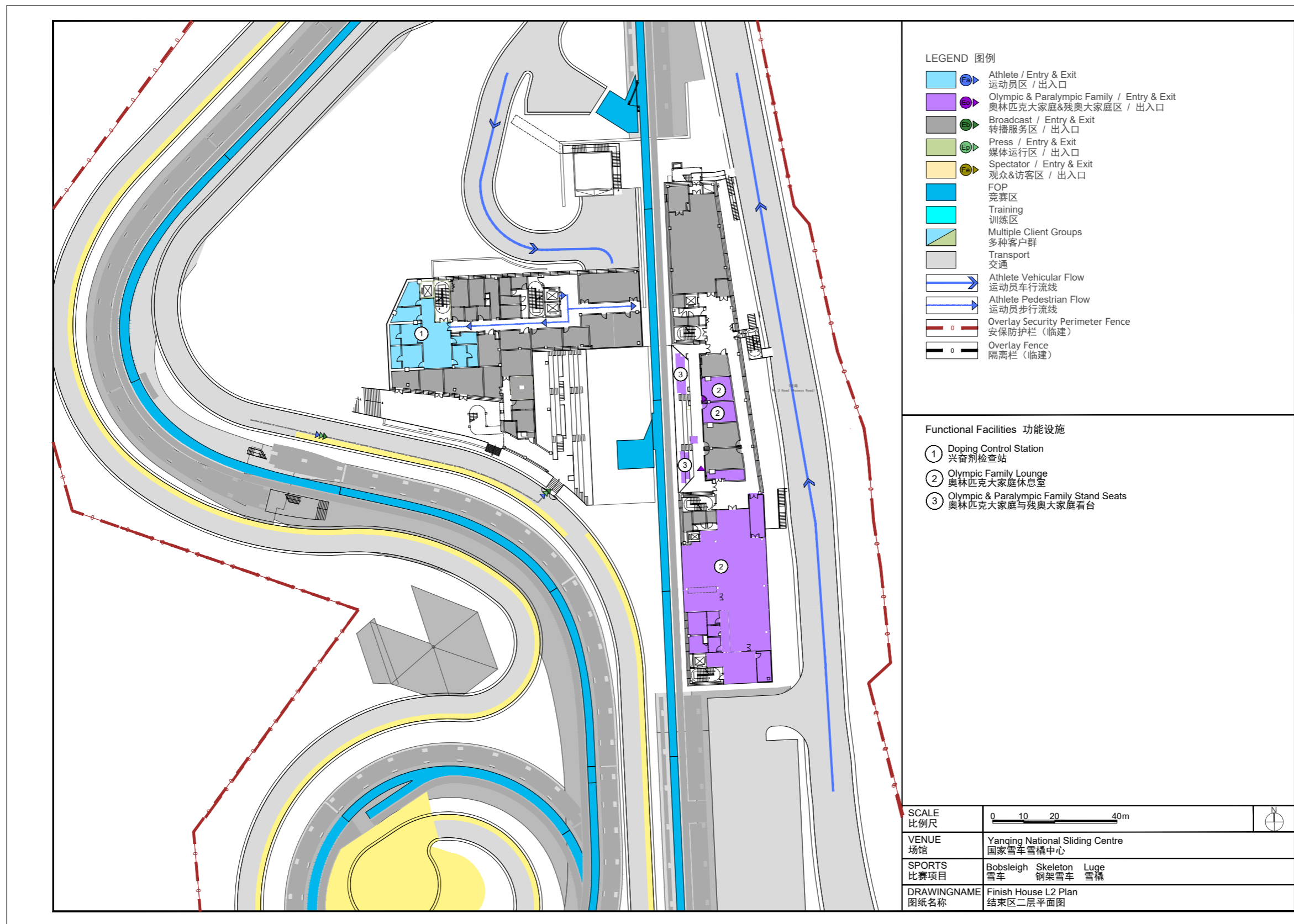
Yanqing National Sliding Centre Start House Plan



Yanqing National Sliding Centre Finish House L1 Plan



Yanqing National Sliding Finish House L2 Plan

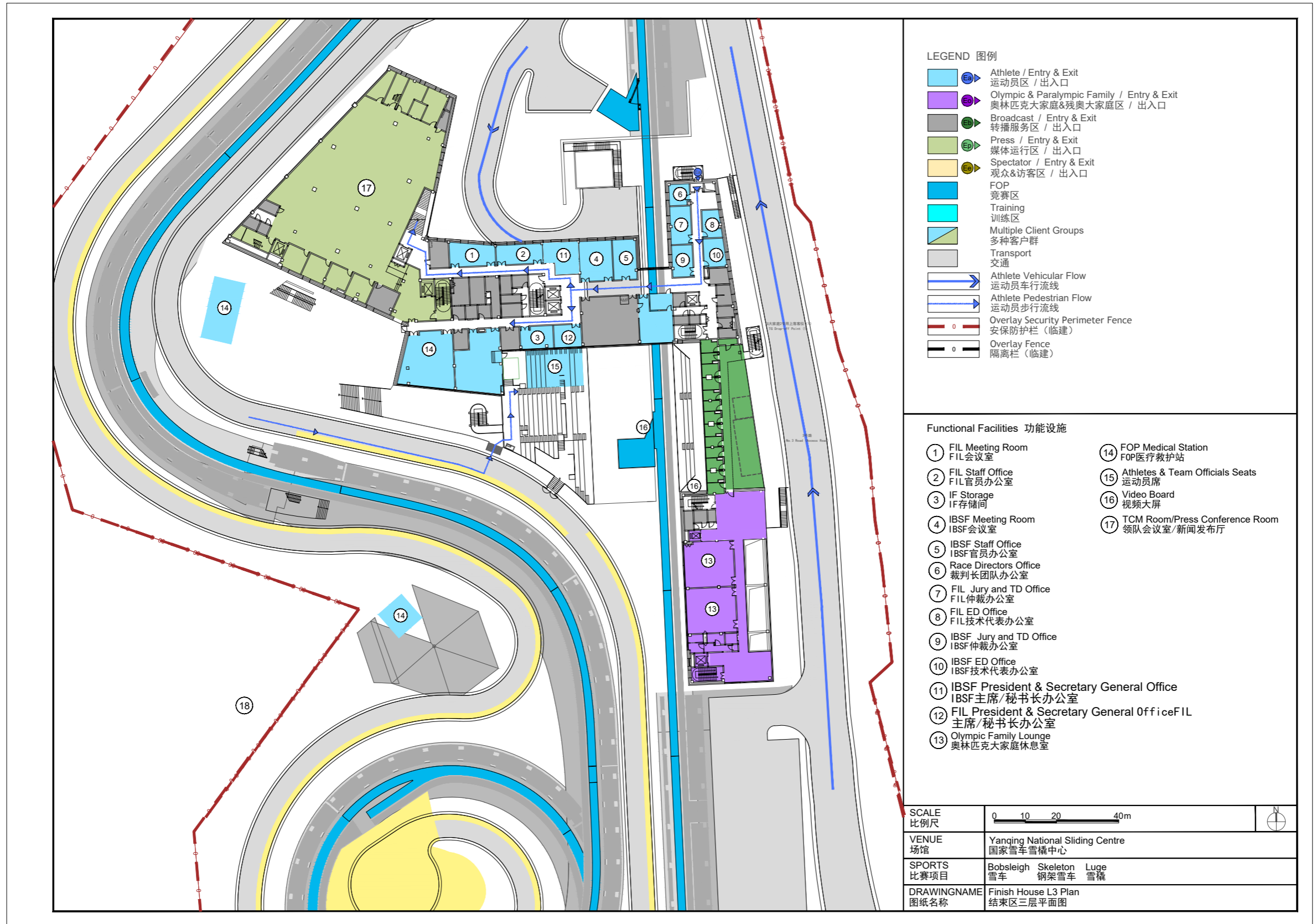


- LEGEND 图例**
- Athlete / Entry & Exit
运动员区 / 出入口
 - Olympic & Paralympic Family / Entry & Exit
奥林匹克大家庭&残奥大家庭区 / 出入口
 - Broadcast / Entry & Exit
转播服务区 / 出入口
 - Press / Entry & Exit
媒体运行区 / 出入口
 - Spectator / Entry & Exit
观众&访客区 / 出入口
 - FOP
竞赛区
 - Training
训练区
 - Multiple Client Groups
多种客户群
 - Transport
交通
 - Athlete Vehicular Flow
运动员车行流线
 - Athlete Pedestrian Flow
运动员步行流线
 - - - Overlay Security Perimeter Fence
安保护栏 (临建)
 - - - Overlay Fence
隔离栏 (临建)

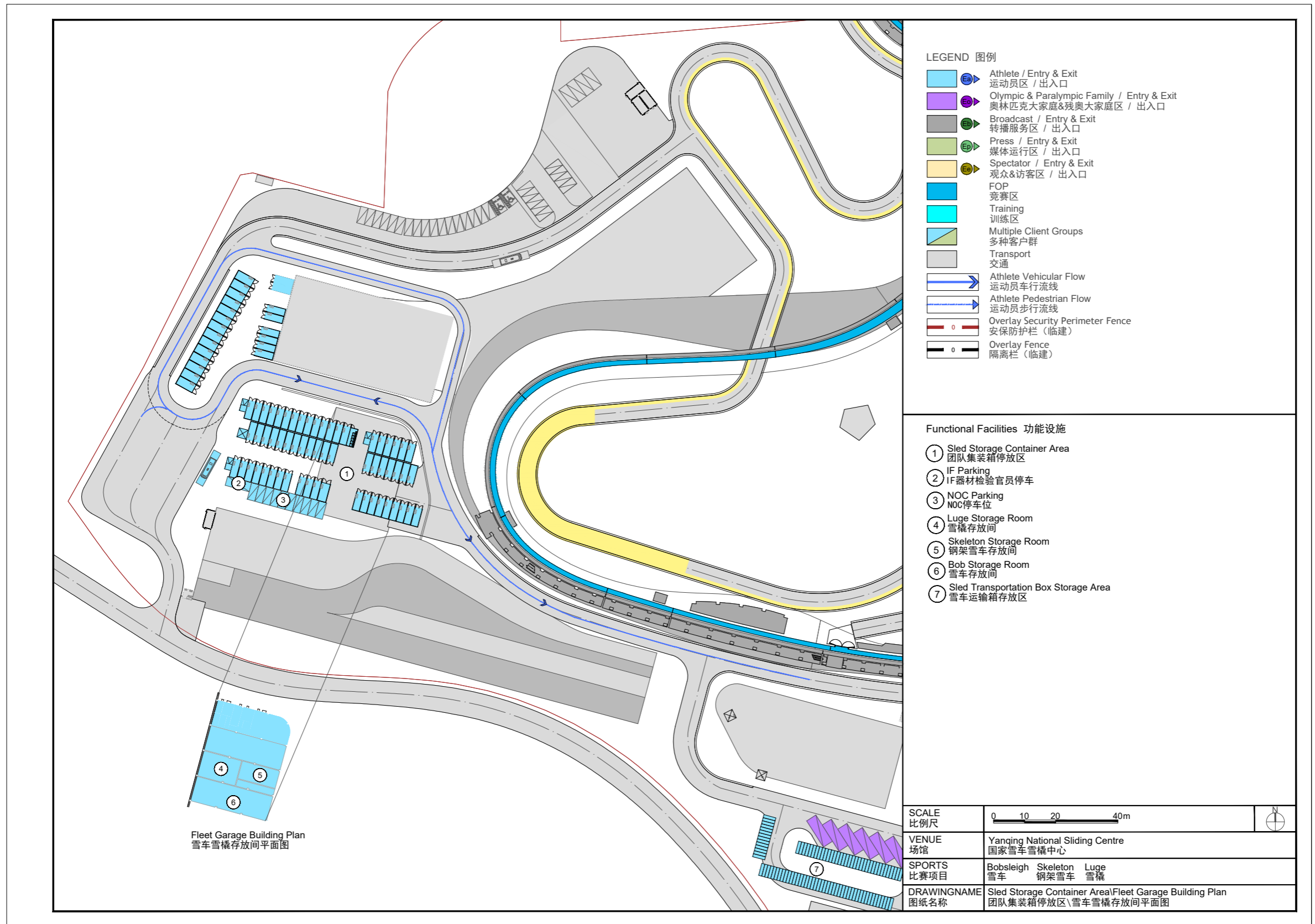
- Functional Facilities 功能设施**
- ① Doping Control Station
兴奋剂检查站
 - ② Olympic Family Lounge
奥林匹克大家庭休息室
 - ③ Olympic & Paralympic Family Stand Seats
奥林匹克大家庭与残奥大家庭看台

SCALE 比例尺	0 10 20 40m	
VENUE 场馆	Yanqing National Sliding Centre 国家雪车雪橇中心	
SPORTS 比赛项目	Bobsleigh Skeleton Luge 雪车 钢架雪车 雪橇	
DRAWINGNAME 图纸名称	Finish House L2 Plan 结束区二层平面图	

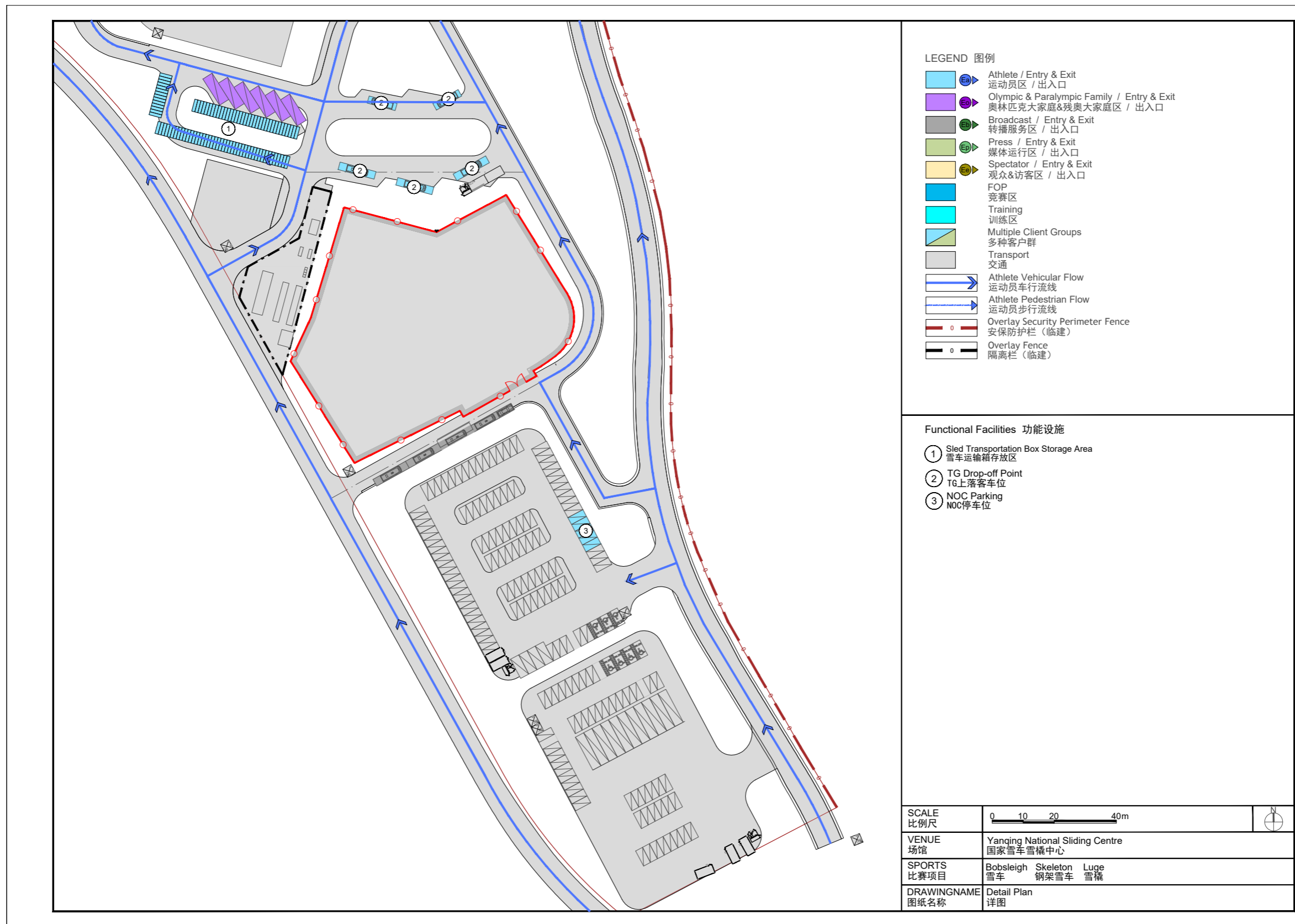
Yanqing National Sliding Centre Finish House L3 Plan



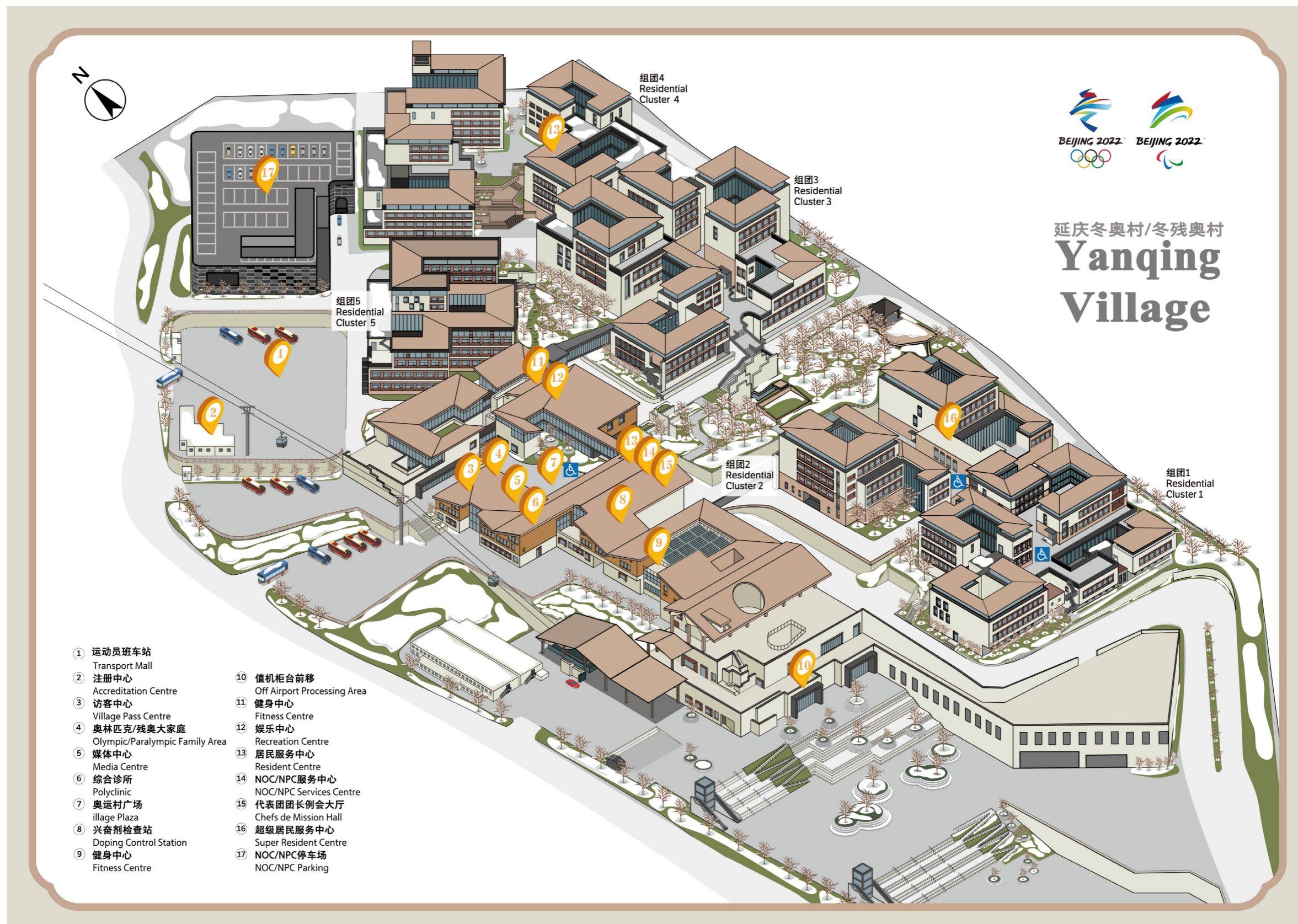
Yanqing National Sliding Centre Sled Storage Container Area\Fleet Garage Building Plan



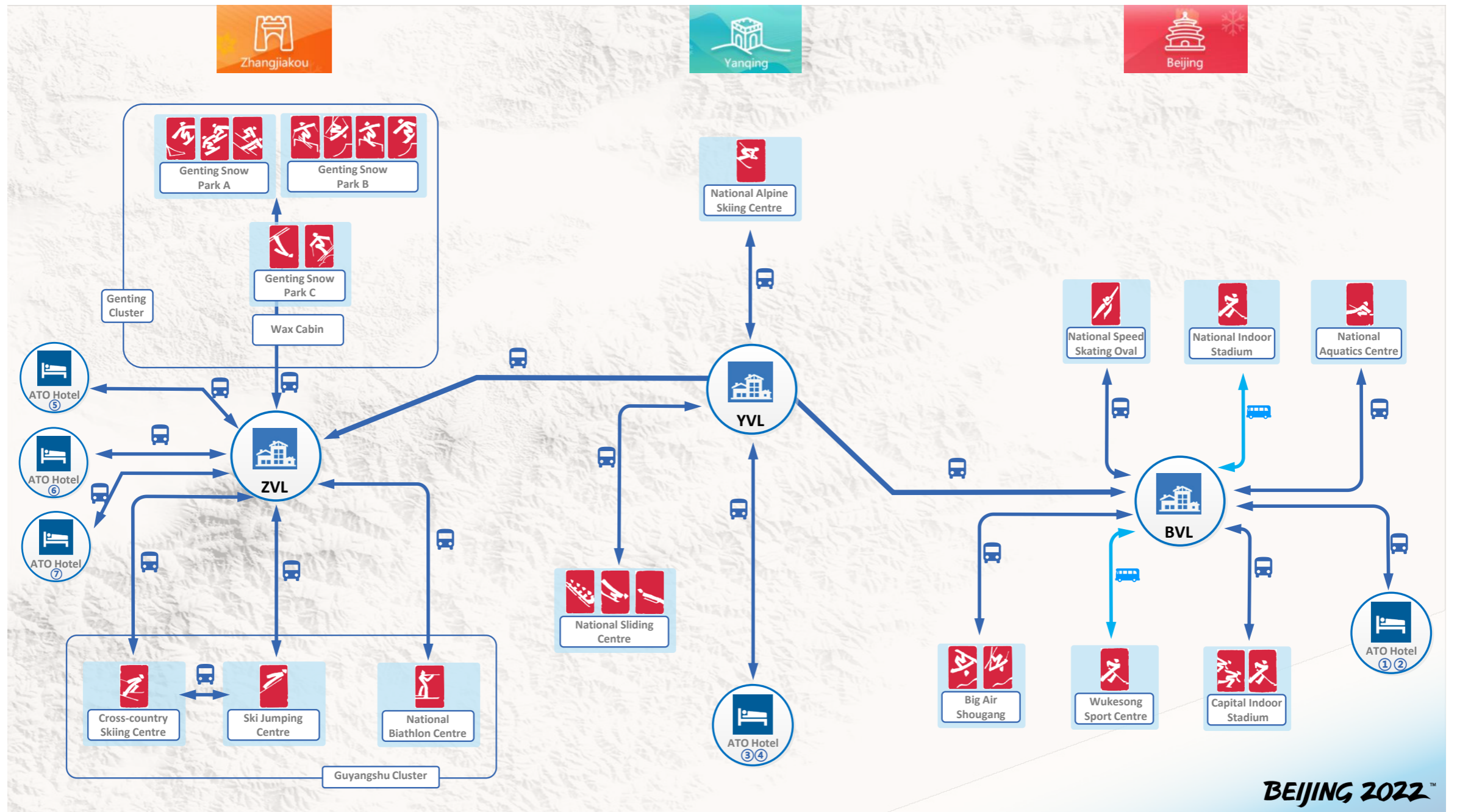
Yanqing National Sliding Centre Detail Plan



Yanqing Olympic Village Master Plan



TA Transport



BEIJING 2022™

